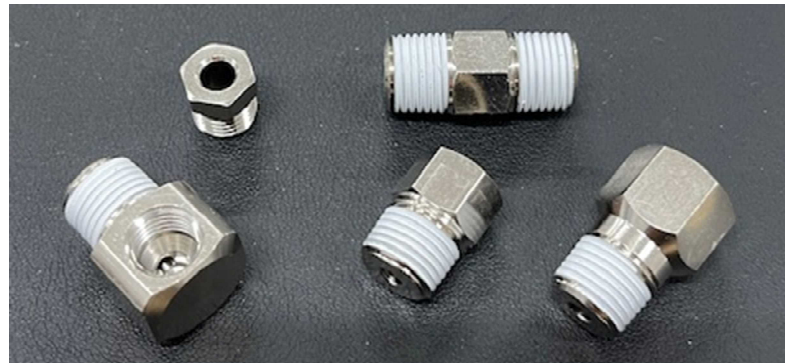


Re-evaluation of Shape & Material to contribute towards the environment

Target products: End Fittings & Tubing parts



Contents

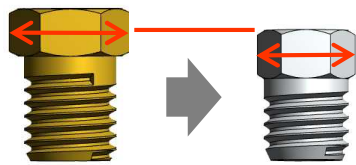
Sr. No.	内容	ページ
1	End Fittings & tubing parts re-evaluation details(Summary)	3
2	End Fittings & tubing parts compatibility details (Catalog Standard List)	4
3	Compression Parts (CB, CN model)	5
4	Straight Adapter (SA model)	6
5	Straight Connector (SC model)	1 1
6	Elbow Adapter (EA model)	1 3
7	Elbow Connector (EC model)	1 9
8	Coupling, Closure plug (KP, CP model)	2 2
9	Other Items	2 4

To improve workability and reduce the workload, tapered screw-type fittings for positioning (to determine direction) pipes and M-thread tapered fittings are now provided with a coated seal. They are also electroless nickel plated.

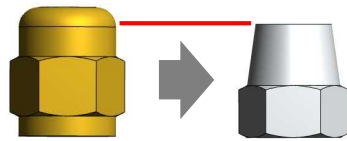
1.End Fittings & tubing parts re-evaluation details (Summary)

All Connectors, Tubing Parts ⇒ Material (Duralumin, Lead Free)

Tubing Part 1 ⇒ Smaller full length/Downsize

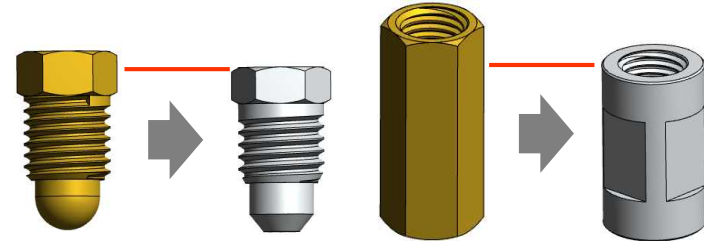


Compression Bushing
*Except $\phi 4$ (M8P1)



Compression Nut

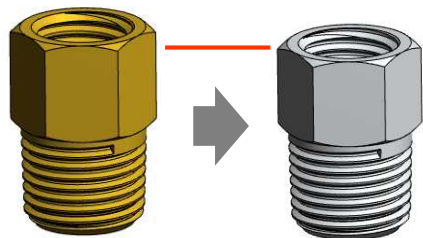
Tubing Part 2 ⇒ Smaller Size



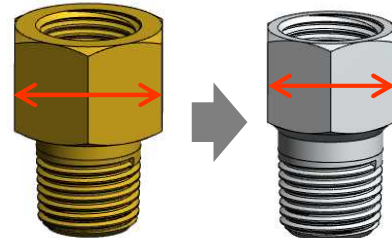
Closure Plug

Coupler

End fittings & Tubing Parts
Straight type ⇒ Smaller full length/Downsize

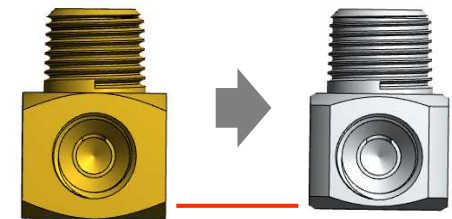
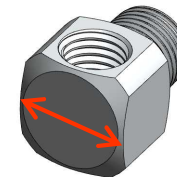
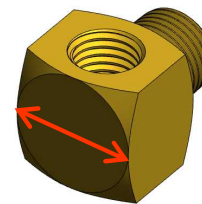


Straight Adapter



Straight Connector

End fittings & Tubing Parts
Elbow type ⇒ Smaller full length/Downsize



Elbow Adapter
Elbow Connector

◆ Due to standardization of parts, some fittings may have slightly different dimensions when installed.

2. End Fittings & tubing parts compatibility details

Model	Part Number	Compatibility	Remark
Compression Bushing	106253		
	206252		
	207252		
Compression Nut	106251		
	206251		
Straight Adapter	106001		
	106002		
	106003		
	106004		
	106005		
	106062		
	106064		
	106065		
	106067		
	106081		
	106082		
	106084		
	106085		
	106088		
	106089		
	106091		
	106094		
	106095		
	106099		
	106353		
	106366		
	206001		
	206081		
	207001		

Model	Part Number	Compatibility	Remark
Straight Connector	106141		
	106142		
	106143		
	106144		
	106145		
	106146		
	106147		
	106151		
	106154		
	166152		
Elbow Adapter	206141		
	106021		
	106022		
	106023		
	106024		
	106025		
	106026		
	206091	×	
	206092	×	
	206100	×	Replaced by EA0140
	106037		
	106356	×	
	106075		
	166054		
166039			

【Compatibility】
 Blank: Yes
 X: Different

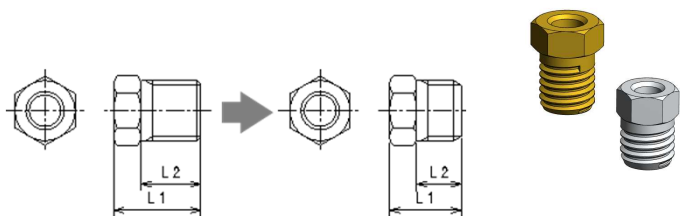
Model	Part Number	Compatibility	Remark
Elbow Connector	106101	×	
	106102	×	
	106103	×	
	106104	×	
	106105	×	
	106106	×	
	106107	×	Replaced by EC0000
	106121	×	
	106122	×	
	106123	×	
	106124	×	
	106125	×	
	106126	×	
	106181	×	
	106182	×	
	106183		
	106184		
	106185		
	106192		
	106382		
106383			
Coupler	106201	×	
	106202	×	
	106211		
	106221		
	106231		
	106291	×	
	106292	×	
	106293	×	
	106294	×	
	207201	×	Discontinued
	207202	×	
	Closure Plug	106255	
206255			
207255			

3. Compression Parts (CB · CN model)

Refer the drawing to check the change

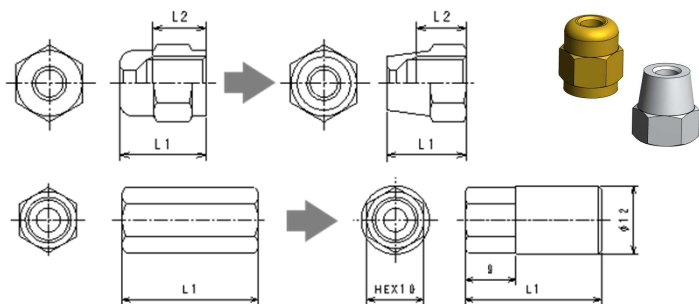
Compatibility

○ : Yes × : No



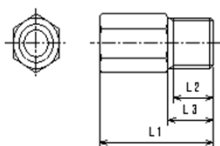
*Except CB0001

Before		○After	Before		After		Thread Size
Part Number	Model	Part Number	L1	L2	L1	L2	External Thread
106253	CB-4-8	CB0001	11.6	8	11.6	8	M8 × 1
206252	CB-6	CB0111	12.5	8.5	10.5	6.5	M10 × 1
207252	CB-8	CB0221	18.5	14	16.5	12	M14 × 1.5



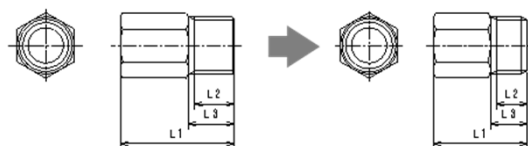
CN-4-B

Before		○After	Before		After		Thread Size
Part Number	Model	Part Number	L1	L2	L1	L2	External thread
106251	CN-4	CN0001	13	8	12	7.5	M8 × 1
206251	CN-6	CN0111	13	8	11.5	6.5	M10 × 1
166268	CN-4-B	CN2001	24	—	24	—	M8 × 1



CB-4-B

Before		○After	Before			After			Thread Size
Part Number	Model	Part Number	L1	L2	L3	L1	L2	L3	External thread
166253	CB-4-B	CB2001	20	7	8	20	7	8	M8 × 1
166255	CB-6-B	CB2111	20	7	8	15	5	6	M10 × 1



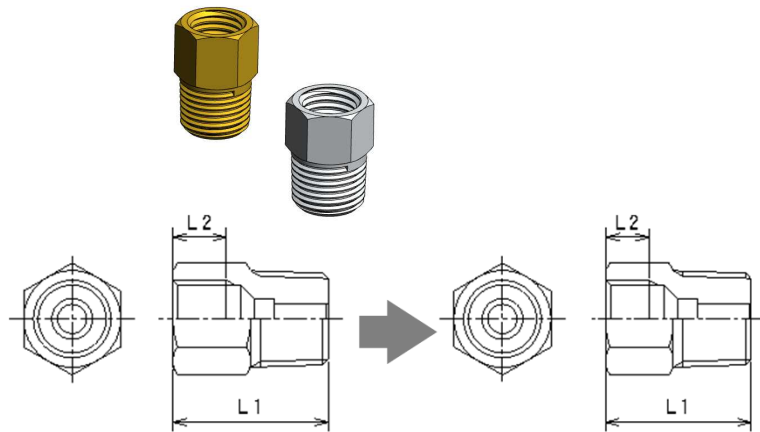
CB-6-B

4. Straight Adapter (SA model)

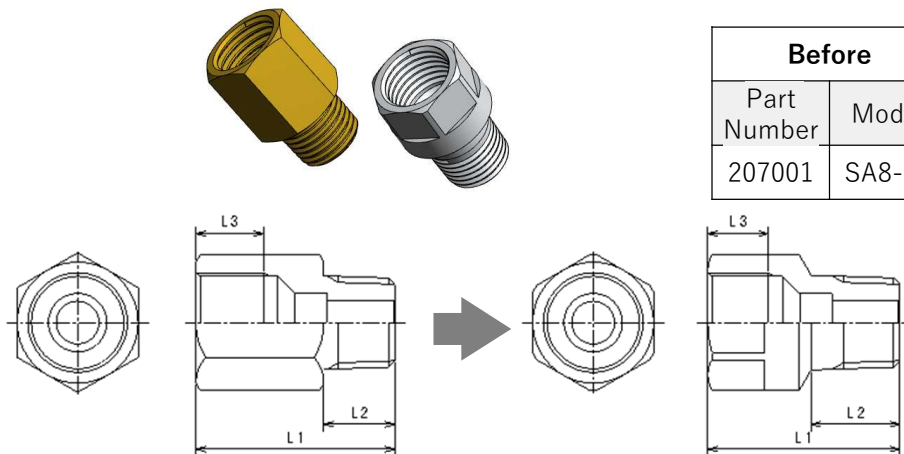
Compatibility

○ : Yes × : No

Refer the drawing to check the change



Before		○After(Seal Coated)	Before		After		Thread Size	
Part Number	Model	Part Number	L1	L2	L1	L2	Internal Thread	External Thread
106001	SA4-16	SA0000	16	5.5	15	4.5	M8 × 1	R1/8
106002	SA4-20	SA5000	20		19		M8 × 1	
106003	SA4-25	SA5010	25		24		M8 × 1	
106004	SA4-30	SA5020	30		29		M8 × 1	
106005	SA4-35	SA5030	35		34		M8 × 1	
206001	SA6-20	SA0110	20		19		M10 × 1	



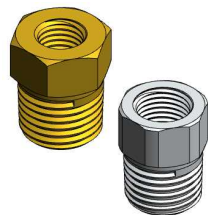
Before		○After(Seal Coated)	Before			After			Thread Size	
Part Number	Model	Part Number	L1	L2	L3	L1	L2	L3	Internal Thread	External Thread
207001	SA8-28	SA0640	28	10	9.5	27	12.5	8.5	M14 × 1.5	R1/4

4. Straight Adapter (SA model)

Compatibility

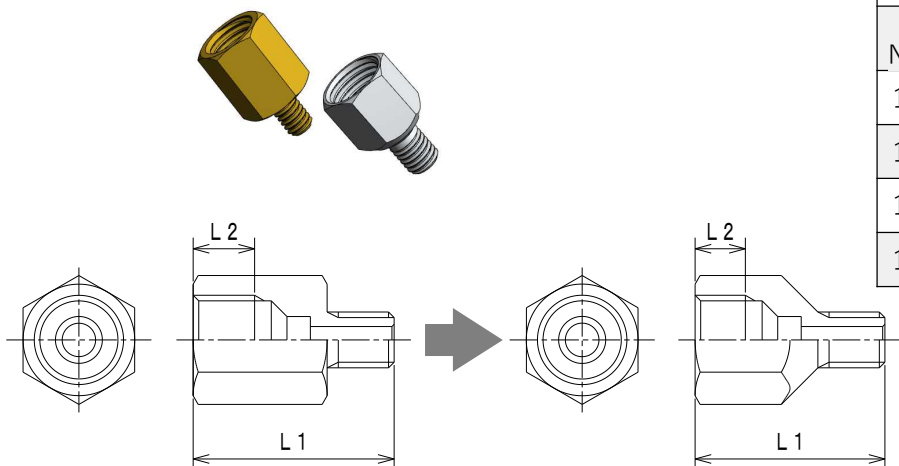
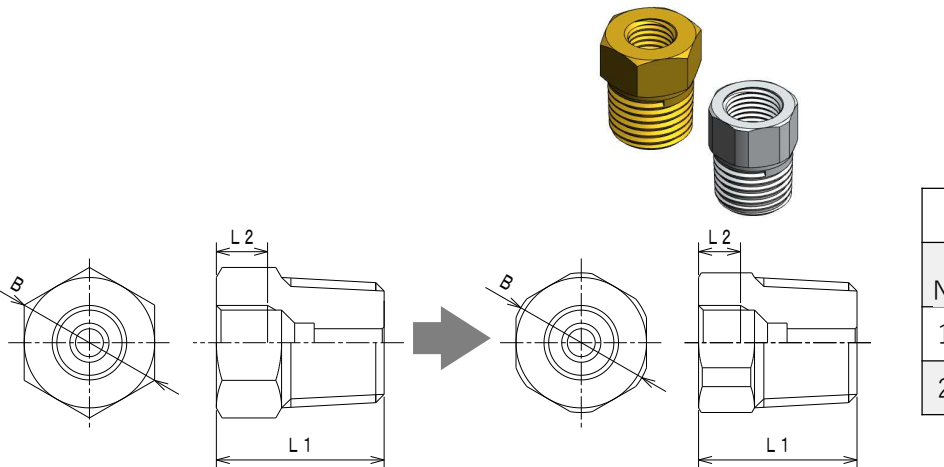
○ : Yes × : No

Refer the drawing to check the change



Before		○After(Seal Coated)	Before			After			Thread Size	
Part Number	Model	Part Number	L1	L2	B	L1	L2	B	Internal Thread	External Thread
106091	SA4-2R	SA0730	18	5.5	(16)	17	4.5	Φ15	M8 × 1	R1/4
206081	SA6-2R	SA0530	20	6.5	(16)	19	5.5	Φ15	M10 × 1	

Before		○After	Before		After		Thread Size	
Part Number	Model	Part Number	L1	L2	L1	L2	Internal Thread	External Thread
106082	SA4-5A	SA5301	18	5.5	17	4.5	M8 × 1	M5 × 0.8
106084	SA4-6A	SA0201						M6 × 1
106085	SA4-6B	SA0301						M6 × 0.75
106088	SA4-8A	SA5101						M8 × 1

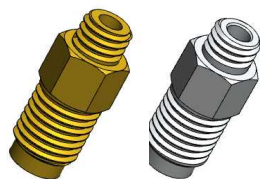


4. Straight Adapter (SA model)

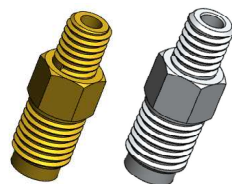
Compatibility

○ : Yes × : No

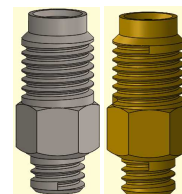
Refer the drawing to check the change



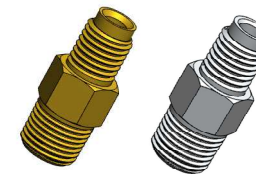
SAT-6A



SAT-6B



SA5781(176067)



SAT-1R

Before		○After	Before		After		Thread Size	
Part Number	Model	Part Number	L1	L2	L1	L2	External Thread	External Thread
106062	SAT-6A	SA0421	20	4	20	4	M8×1	M6×1
106065	SAT-6B	SA5761	23	7	23	7	M8×1	M6×0.75
106067	***	SA5781	20	4	20	4	M8×1	M6×0.75

Before		○After (Seal Coated)	Before		After		Thread Size	
Part Number	Model	Part Number	L1	L2	L1	L2	External Thread	External Thread
106081	SAT-1R	SA5800	25	8	25	8	M8×1	R1/8



SATG-6B

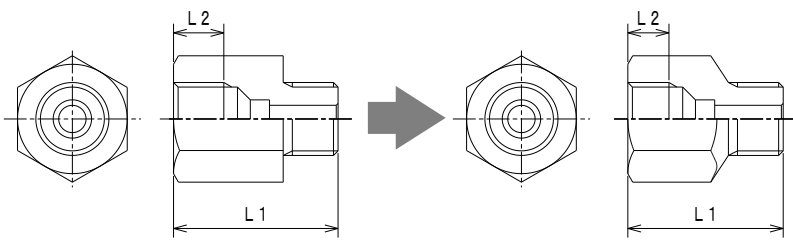
Before		○After	Before		After		Thread Size	
Part Number	Model	Part Number	L1	L2	L1	L2	External Thread	External Thread
106064	SATG-6B	SA5771	30	14	30	14	M8×1	M6×0.75

4. Straight Adapter (SA model)

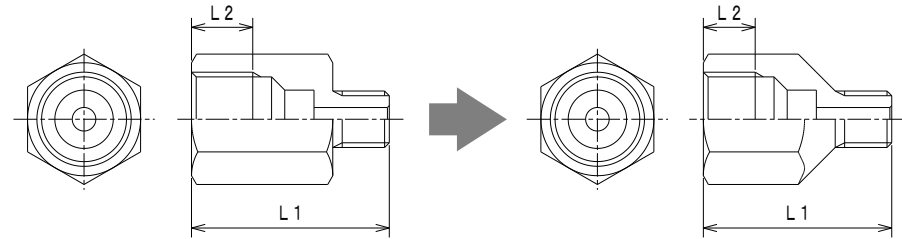
Refer the drawing to check the change

Compatibility

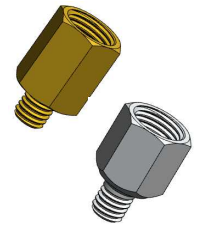
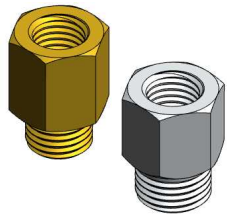
○ : Yes × : No



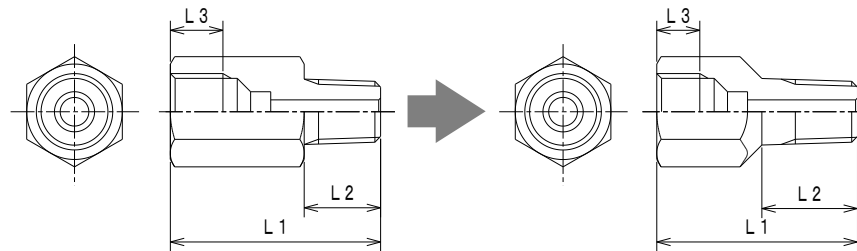
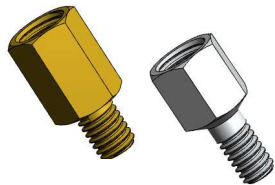
SA4-10A



SA6-6A



Before		○After	Before		After		Thread Size	
Part Number	Model	Part Number	L1	L2	L1	L2	Internal Thread	External Thread
106089	SA4-10A	SA5541	18	5.5	17	4.5	M8×1	M10×1
106094	SA6-6A	SA5241	21	6.5	20	5.5	M10×1	M6×1



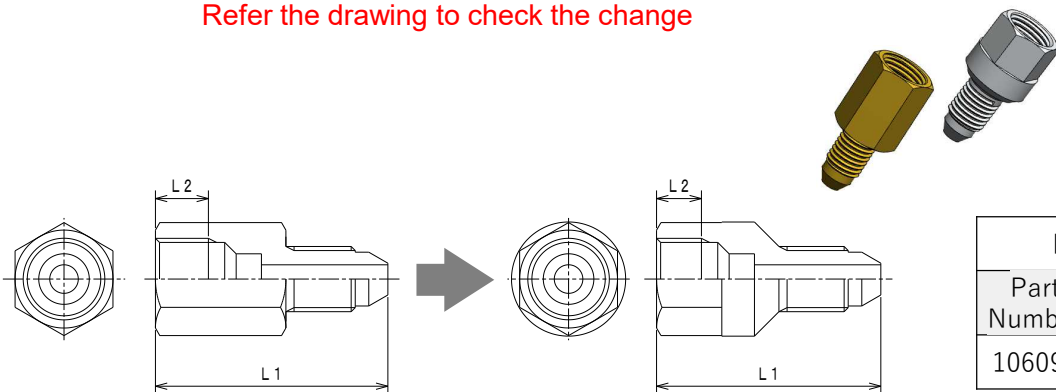
Before		○After	Before			After			Thread Size	
Part Number	Model	Part Number	L1	L2	L3	L1	L2	L3	Internal Thread	External Thread
106099	SA4-U	SA0801	21	8	5.5	20	10	4.5	M8×1	1/4-28UNF

4. Straight Adapter (SA model)

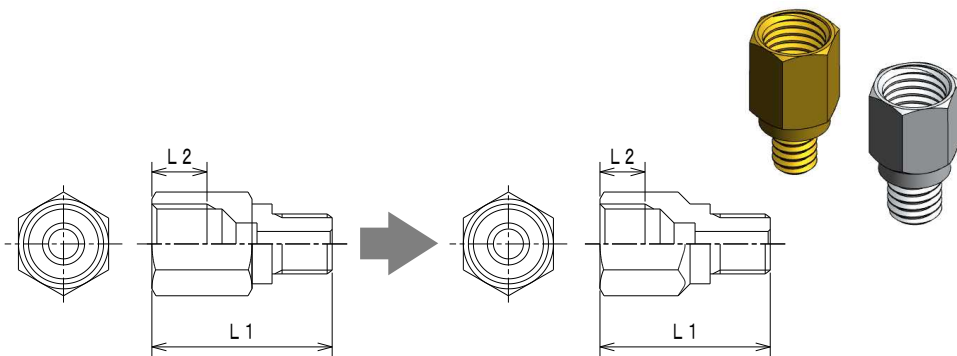
Compatibility

○ : Yes × : No

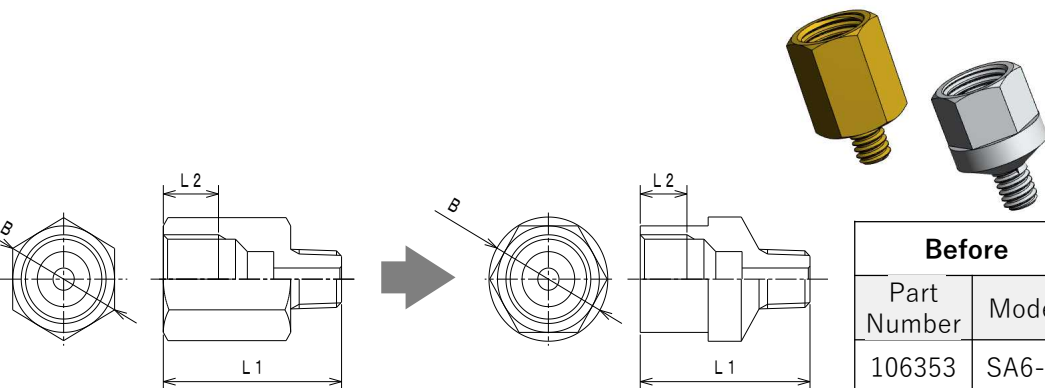
Refer the drawing to check the change



Before		○After	Before		After		Thread Size	
Part Number	Model	Part Number	L1	L2	L1	L2	Internal Thread	External Thread
106095	SA6-8T	SA2211	28.5	5.5	27.5	4.5	M10 × 1	M8 × 1



Before		○After	Before		After		Thread Size	
Part Number	Model	Part Number	L1	L2	L1	L2	Internal Thread	External Thread
106366	SAG4-6B	SA7191	21	5.5	20	4.5	M8 × 1	M6 × 0.75



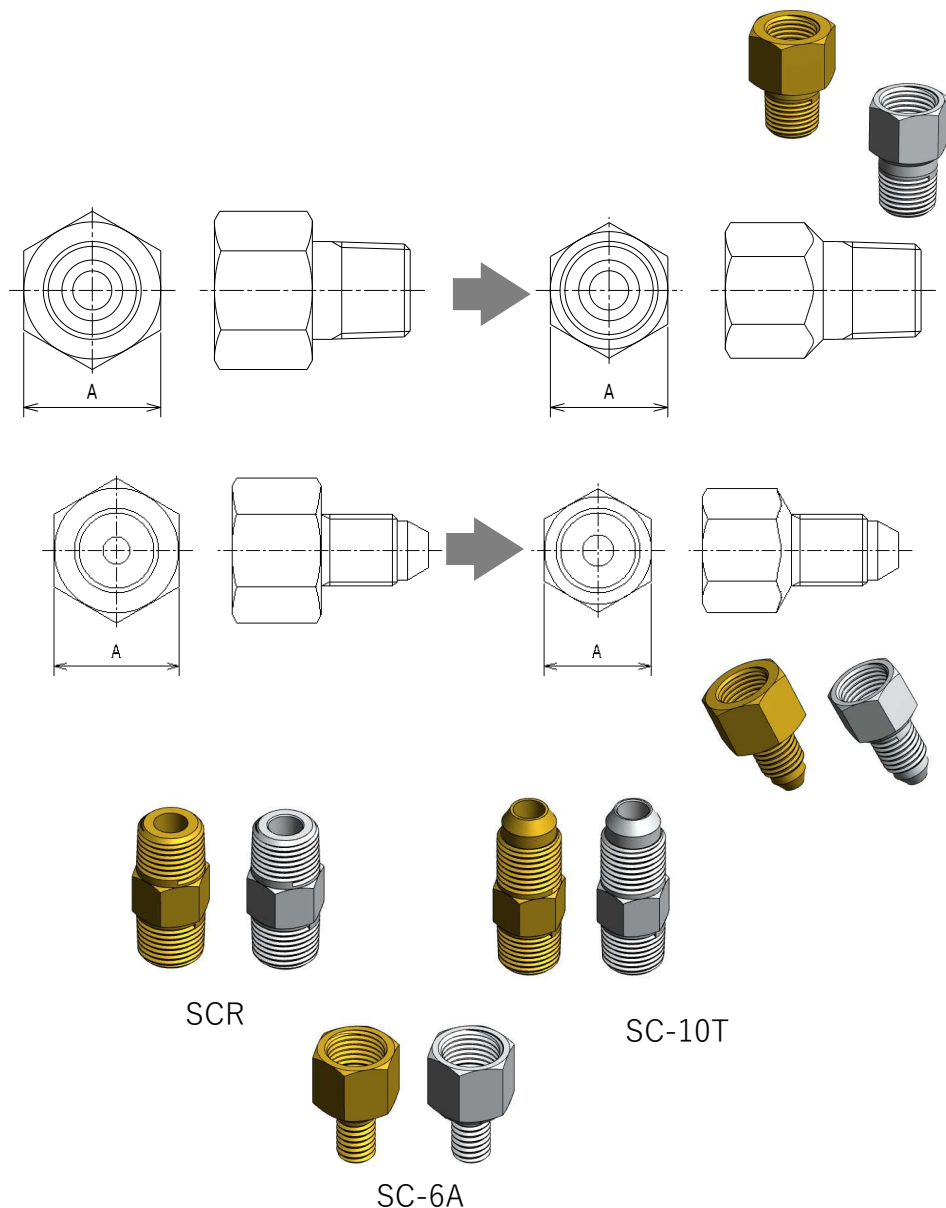
Before		○After	Before			After			Thread Size	
Part Number	Model	Part Number	L1	L2	B	L1	L2	B	Internal Thread	External Thread
106353	SA6-U	SA6040	21	5.5	(14)	20	4.5	Φ14	M10 × 1	1/4-28UNF

5. Straight Adapter (SC model)

Compatibility

○ : Yes × : No

Refer the drawing to check the change



Before		OAfter(Seal Coated)	Before		After		Thread Size	
Part Number	Model	Part Number	A	L	A	L	Internal Thread	External Thread
106141	SC1-20	SC0000	HEX14	20	HEX12	20	Rc1/8	R1/8
106142	SC1-25	SC5000	HEX14	25	HEX12	25		
106143	SC1-30	SC5010	HEX14	30	HEX12	30		
106144	SC1-40	SC5020	HEX14	40	HEX12	40		
106145	SC1-50	SC5030	HEX14	50	HEX12	50		
106146	SC1-60	SC0010	HEX14	60	HEX12	60		

Before		OAfter	Before	After	Thread Size	
Part Number	Model	Part Number	A	A	Internal Thread	External Thread
106147	SC-8T	SC2001	HEX14	HEX12	Rc1/8	M8 × 1

Before		OAfter(Seal Coated)	Thread Size	
Part Number	Model	Part Number	External Thread	External Thread
106151	SCR	SC0120	R1/8	R1/8
166152	SC-10T	SC5460	R1/8	M10 × 1

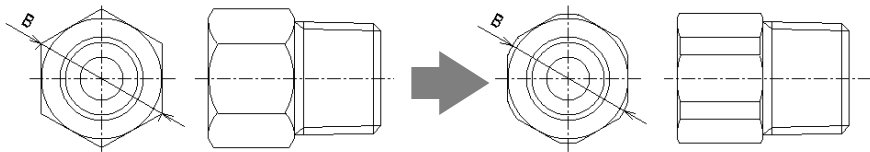
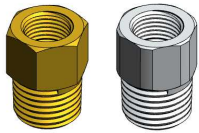
Before		OAfter	Thread Size	
Part Number	Model	Part Number	Internal Thread	External Thread
106154	SC-6A	SC5201	Rc1/8	M6 × 1

5. Straight Connector (SC model)

Compatibility

○ : Yes × : No

Refer the drawing to check the change



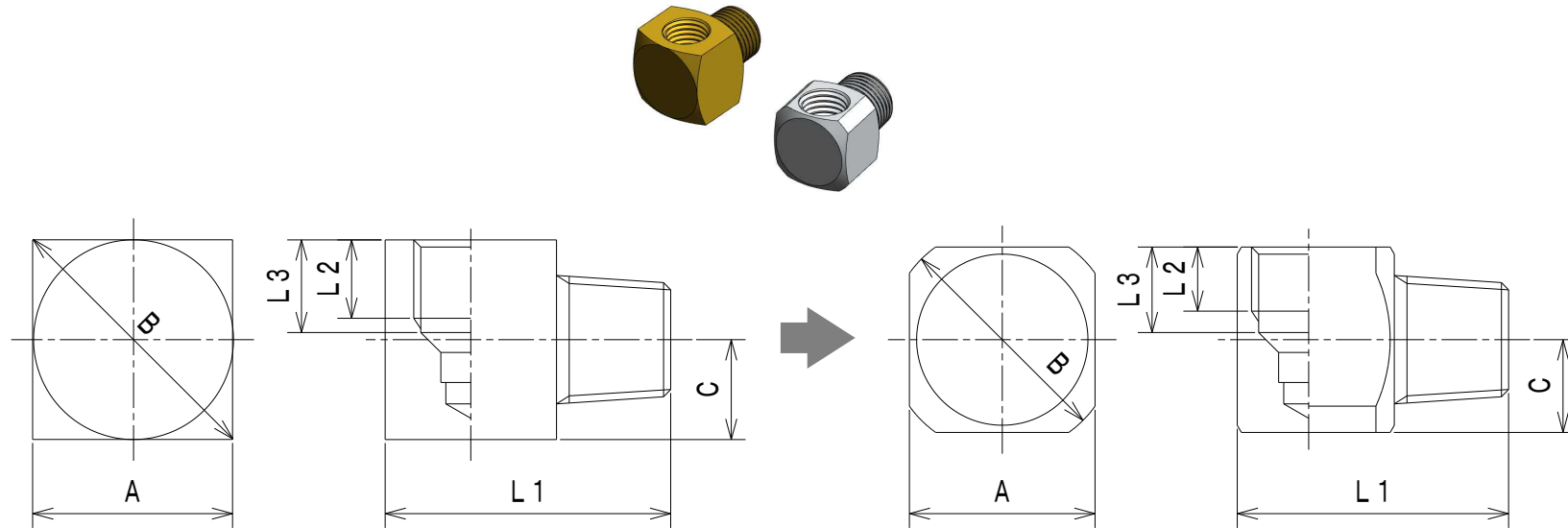
Before		○After(Seal Coated)	Before	After	Thread Size	
Part Number	Model	Part Number	B	B	Internal Thread	External Thread
206141	SC2	SC5350	(Φ16)	Φ15	Rc1/8	R1/4

6. Elbow Adapter (EA model)

Compatibility

○ : Yes × : No

Refer the drawing to check the change



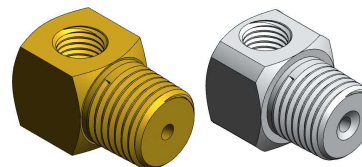
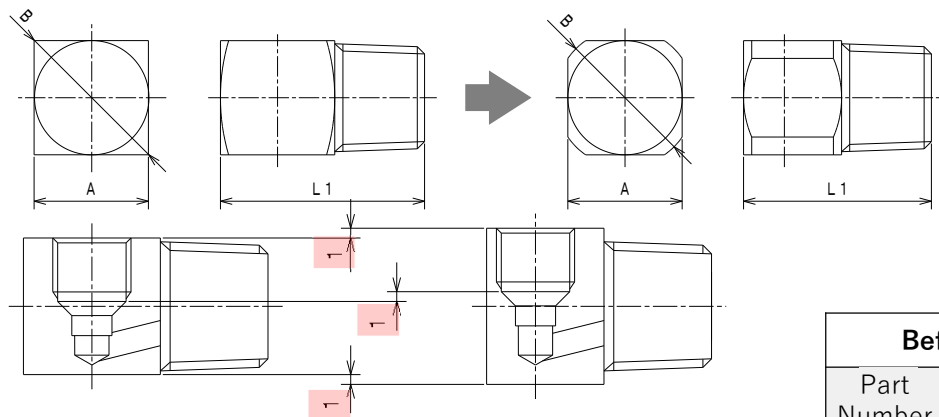
Before		○After(Seal Coated)	Before						After						Thread Size	
Part Number	Model	Part Number	A	B	C	L1	L2	L3	A	B	C	L1	L2	L3	Internal Thread	External Thread
106021	EA4-20	EA0000	□14	(20)	7	20	5.5	6.5	□13	Φ16	6.5	19	4.5	6	M8×1	R1/8
106022	EA4-25	EA0010				25						24				
106023	EA4-30	EA5000				30						29				
106024	EA4-40	EA0020				40						39				
106025	EA4-50	EA0030				50						49				
106026	EA4-60	EA5010				60						59				

6. Elbow Adapter (EA model)

Compatibility

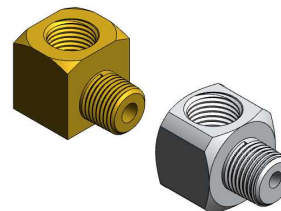
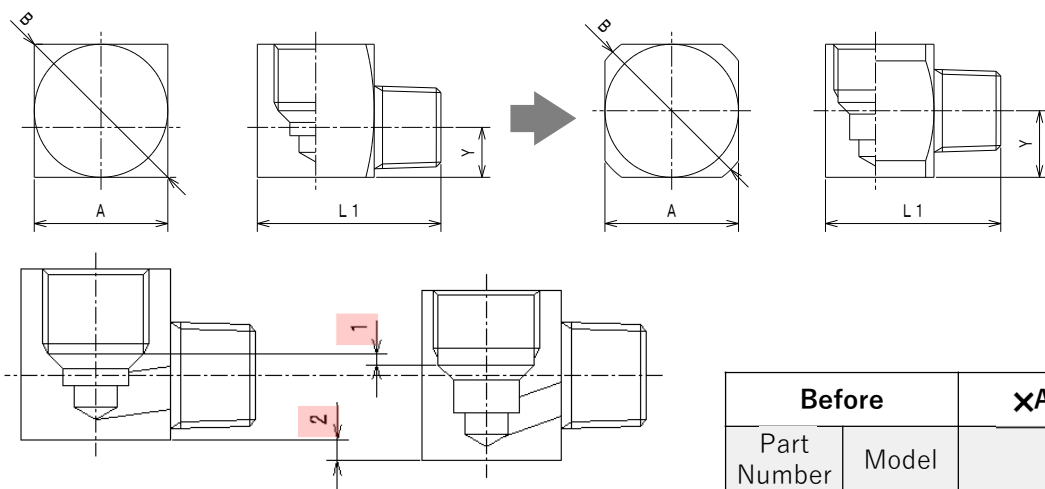
○ : Yes × : No

Refer the drawing to check the change



【 Compared with the past 】
 • Seat position : Difference of 1mm
 • After installation: 1mm longer in both direction

Before		✗After(Seal Coated)	Before			After			Thread Size	
Part Number	Model	Part Number	A	B	L1	A	B	L1	Internal Thread	External Thread
206091	EA4-2R	EA0440	□14	(20)	25	□16	Φ20	23	M8×1	R1/4



【 Compared with the past 】
 • Seat Position :Difference of 1mm (apart)
 • After Installation: 2mm downward displacement

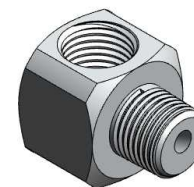
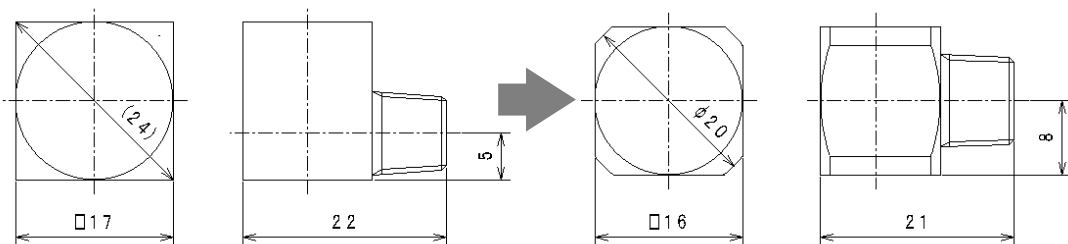
Before		✗After(Seal Coated)	Before				After				Thread Size	
Part Number	Model	Part Number	A	B	L1	Y	A	B	L1	Y	Internal Thread	External Thread
206092	EA6-22	EA0140	□16	(Φ23)	22	6	□16	Φ20	21	8	M10×1	R1/8

6. Elbow Adapter (EA model)

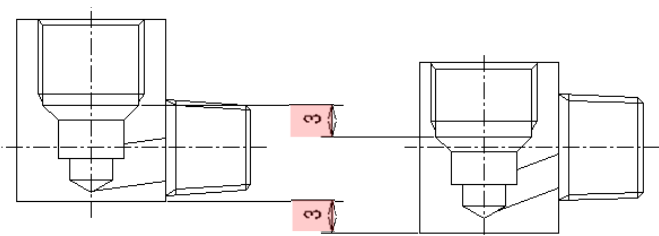
Compatibility

○ : Yes × : No

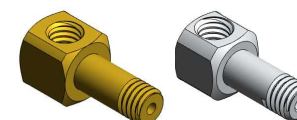
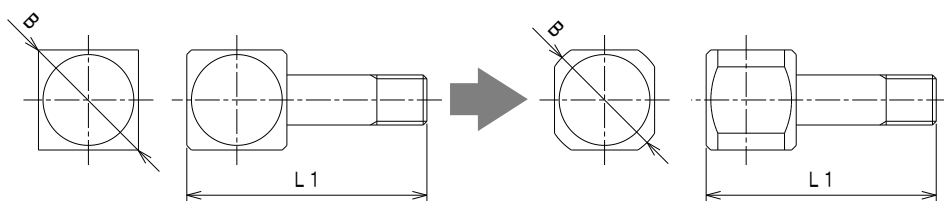
Refer the drawing to check the change



【Compared with the past】
 • Seat Position: Difference of 3mm (apart)
 • After Installation: 3mm downward displacement.



Before		×After(Seal Coated)	Before				After				Thread Size	
Part Number	Model	Part Number	A	B	L1	Y	A	B	L1	Y	Internal Thread	External Thread
206100	EA6-22F	EA0140	□17	(Φ24)	22	7	□16	Φ20	21	8	M10×1	R1/8



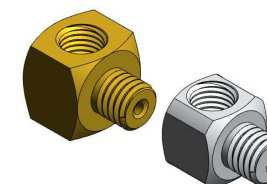
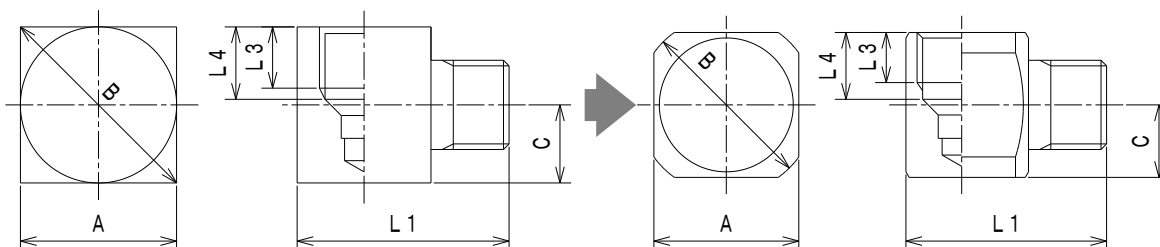
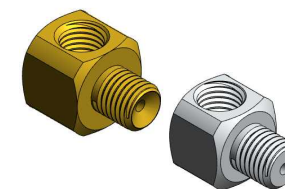
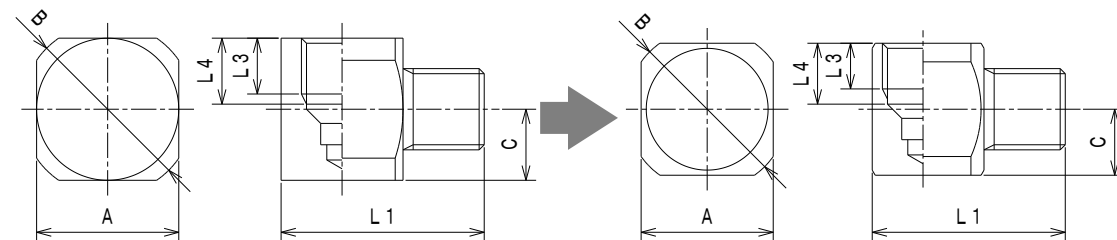
Before		○After(Seal Coated)	Before		After		Thread Size	
Part Number	Model	Part Number	B	L1	B	L1	Internal Thread	External Thread
166039	ECMG-6BL	EA2250	14	24	Φ12.7	23	M6×1	M6×0.75

6. Elbow Adapter (EA model)

Refer the drawing to check the change

Compatibility

○ : Yes × : No



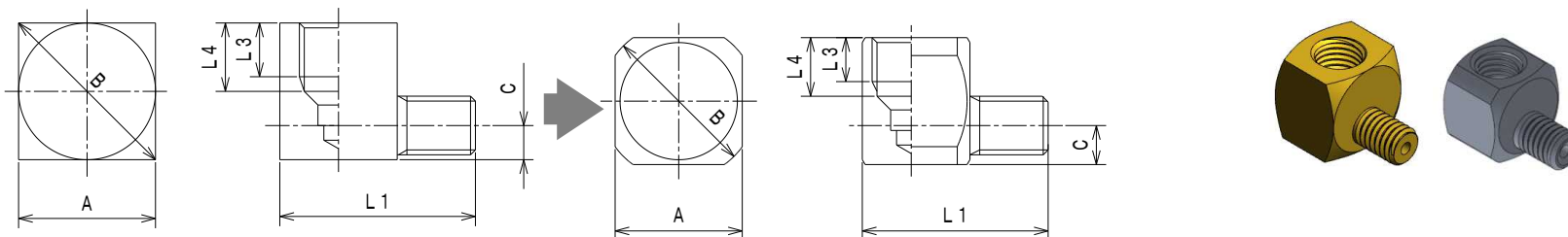
Before		○After(Seal Coated)	Before						After						Thread Size	
Part Number	Model	Part Number	A	B	C	L1	L3	L4	A	B	C	L1	L3	L4	Internal Thread	External Thread
106037	EA4-8 Tapper	EA0300	□14	Φ17	7	20	5.5	6.5	□13	Φ16	6.5	19	4.5	6	M8×1	M8×1
166054	EA4-8B	EA0200	14	(20)	7	19	5.5	6.5	13	Φ16	6.5	18	4.5	6	M8×1	M8×1.25

6. Elbow Adapter (EA model)

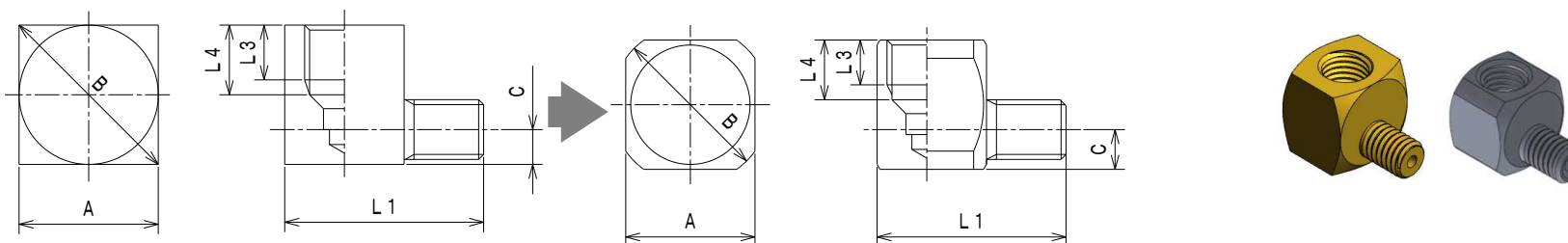
Compatibility

○ : Yes × : No

Refer the drawing to check the change



Before		×After(Seal Coated)	Before						After						Thread Size	
Part Number	Model	Part Number	A	B	C	L1	L3	L4	A	B	C	L1	L3	L4	Internal Thread	External Thread
106356	* * *	EA7200	□14	(20)	3.5	20	5.5	7	□13	Φ16	4	19	4.5	6	M8×1	M6×1



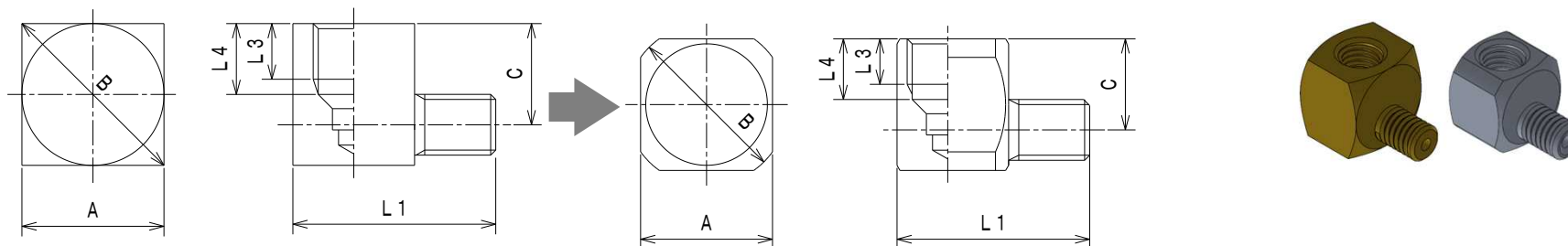
Before		○After	Before						After						Thread Size	
Part Number	Model	Part Number	A	B	C	L1	L3	L4	A	B	C	L1	L3	L4	Internal Thread	External Thread
106075	EA4-6B	EA2101	□14	(20)	3.5	20	5.5	7	□13	Φ16	4	19	4.5	6	M8×1	M6×0.75

6. Elbow Adapter (EA model)

Compatibility

○ : Yes × : No

Refer the drawing to check the change



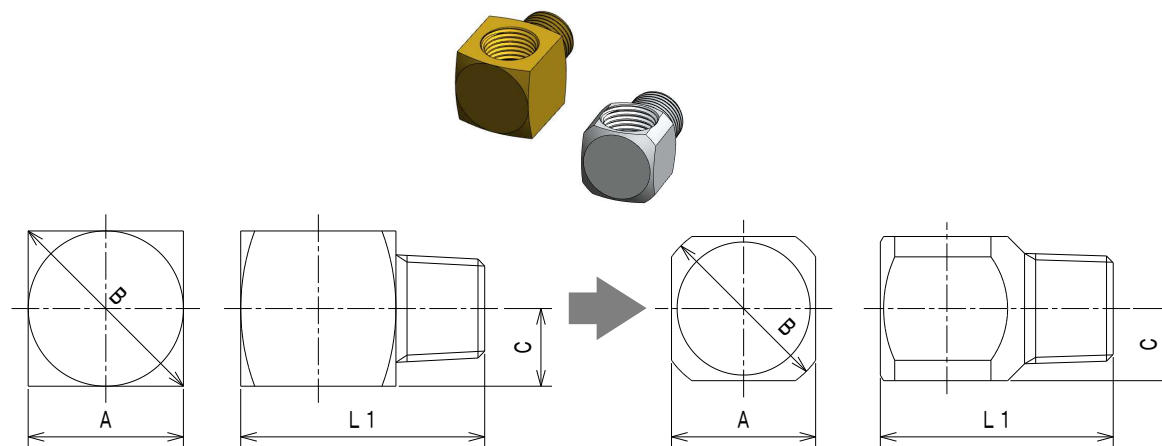
Before		○After	Before						After						Thread Size	
Part Number	Model	Part Number	A	B	C	L1	L3	L4	A	B	C	L1	L3	L4	Internal Thread	External Thread
106076	EA4-6A	EA2001	□14	(20)	10	20	5.5	7	□13	Φ16	9	19	4.5	6	M8 × 1	M6 × 1

7. Elbow Connector (EC model)

Compatibility

○ : Yes × : No

Refer the drawing to check the change



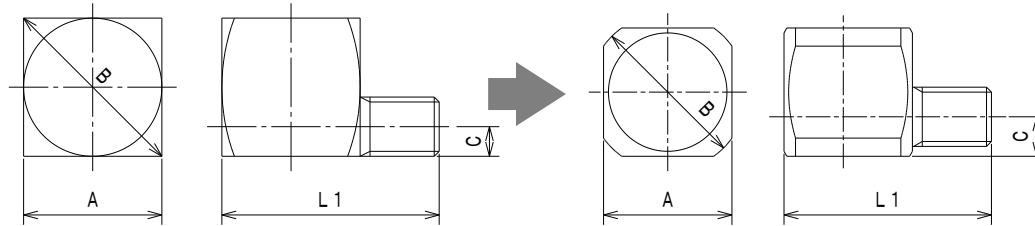
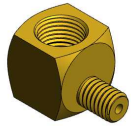
Before		×After(Seal Coated)	Before				After				Thread Size			
Part Number	Model	Part Number	A	B	L1	C	A	B	L1	C	Internal Thread	External Thread		
106101	EC1-22	EC0000	□14	(20)	22	7	□13	Φ16	21	6.5	Rc1/8	R1/8		
106107	EC1-20		□12	-16	20	6								
106102	EC1-25	EC5000	□14	(20)	25	7							24	
106103	EC1-30	EC0010			30									39
106104	EC1-40	EC0020			40									
106105	EC1-50	EC0030			50									
106106	EC1-60	EC5010			60									

7. Elbow Connector (EC model)

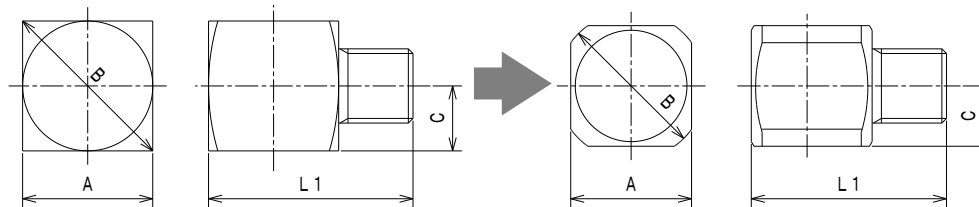
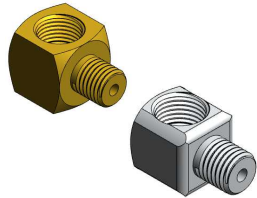
Refer the drawing to check the change

Compatibility

○ : Yes × : No



Before		✗After(Seal Coated)	Before				After				Thread Size	
Part Number	Model	Part Number	A	B	C	L1	A	B	C	L1	Internal Thread	External Thread
106181	EC-6A	EC7701	□14	(20)	4	22	□13	Φ16	4	21	Rc1/8	M6×1



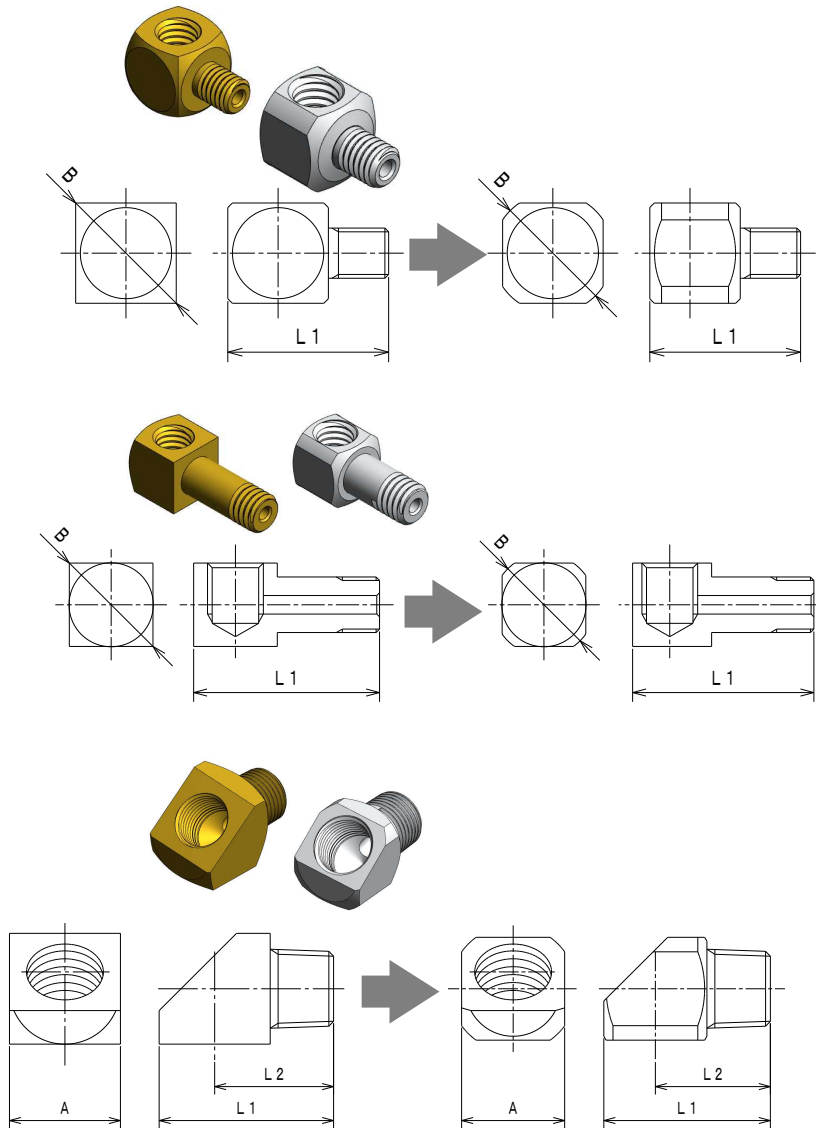
Before		✗After	Before				After				Thread Size	
Part Number	Model	Part Number	A	B	C	L1	A	B	C	L1	Internal Thread	External Thread
106182	EC-8A	EC5101	□14	(20)	7	22	□13	Φ16	6.5	21	Rc1/8	M8×1

7. Elbow Connector (EC model)

Compatibility

○ : Yes × : No

Refer the drawing to check the change



Before		○After	Before		After		Thread Size	
Part Number	Model	Part Number	B	L1	B	L1	Internal Thread	External Thread
106183	ECM-5A	EC7531	(14)	16	Φ12	15	M6×1	M5×0.8
106184	ECM-6B	EC7631					M6×1	M6×0.75

Before		○After(Seal Coated)	Before		After		Thread Size	
Part Number	Model	Part Number	B	L1	B	L1	Internal Thread	External Thread
106185	ECM-6A	EC7030	(14)	16	Φ12	15	M6×1	M6×1
106192	ECM-6BL	EC7130		17		16	M6×1	M6×0.75

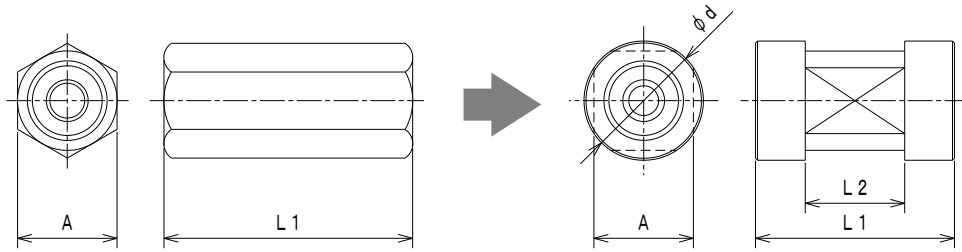
Before		○After(Seal Coated)	Before		After		Thread Size	
Part Number	Model	Part Number	B	L1	B	L1	Internal Thread	External Thread
106382	ECMG-6ALL	EC7230	(13)	23	Φ11	22.5	M6×1	M6×1
106383	ECMG-6AL	EC7250		20		19.5	M6×1	M6×1

Before		×After(Seal Coated)	Before			After			Thread Size	
Part Number	Model	Part Number	A	L1	L2	A	L1	L2	Internal Thread	External Thread
106121	ECC-22	EC2100	□14	22	15	□13	21	14.5	Rc1/8	R1/8
106122	ECC-25	EC7800		25	18		24	17.5		
106123	ECC-30	EC7870		30	23		29	22.5		
106124	ECC-40	EC7880		40	33		39	32.5		
106125	ECC-50	EC7890		50	43		49	42.5		
106126	ECC-60	EC7810		60	53		59	52.5		

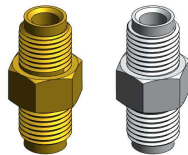
8. Coupling, Closer plug (KP, CP model)

Refer the drawing to check the change

Compatibility
 ○ : Yes × : No



Before		×After	Before		After				Thread Size	
Part Number	Model	Part Number	A	L1	A	d	L1	L2	Internal Thread	Internal Thread
106201	KP-44	KP0001	10	25	Same	Φ12	20	10	M8×1	M8×1
106202	KP-46	KP0201	12	27	10		22.5		M8×1	M10×1
106291	KP-4R	KP5001	14	25	10		20		M8×1	Rc1/8
106292	KP-66	KP0111	14	29	12	Φ14	25		M10×1	M10×1
106293	KP-6R	KP0411	14	25	12		22.5		M10×1	Rc1/8
106294	KP-RR	KP0311	14	25	12		18		Rc1/8	Rc1/8
207202	PSC	KP5111	21	25	18	Φ20	25		Rc3/8	Rc1/8



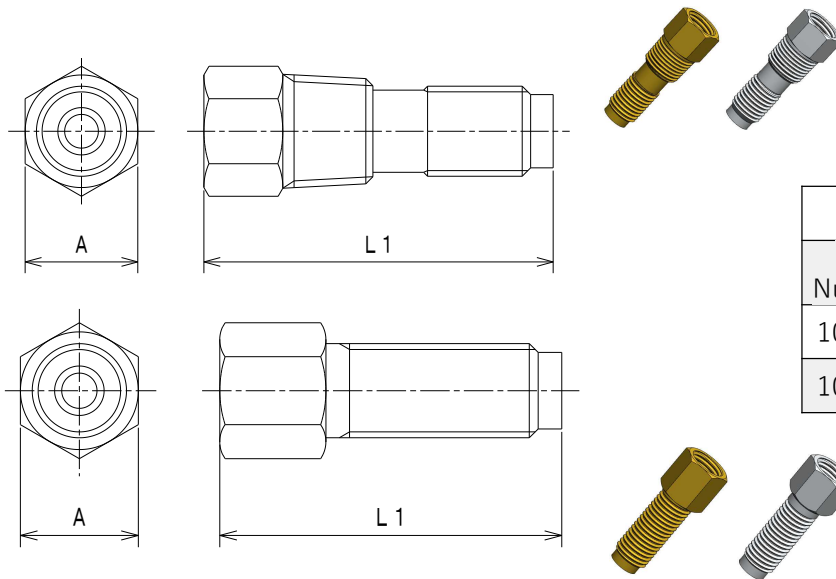
Before		○After	Before	After	Thread Size	
Part Number	Model	Part Number	L1	L1	External Thread	External Thread
106211	KPW-4	KP0501	27	27	M8×1	M8×1

8. Coupling, Closer plug (KP, CP model)

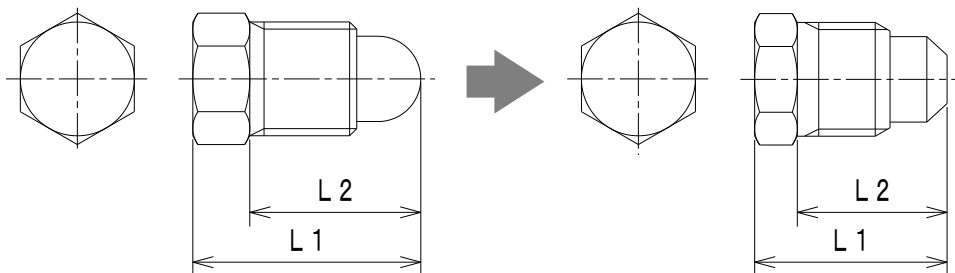
Refer the drawing to check the change

Compatibility

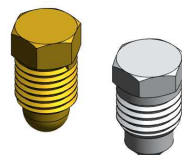
○ : Yes × : No



Before		○After	Before	After	Thread Size		
Part Number	Model	Part Number	L1	L1	Internal Thread	External Thread	External Thread
106221	KPR-4	KP2101	32	31	M8×1	R1/8	M8×1
106231	KP-4	KP7101	30	29	M8×1	M8×1	M8×1



Before		○After	Before	After		Thread Size	
Part Number	Model	Part Number	L1	L2	L1	L2	External Thread
106255	CP-4	CP0001	16	12	13.5	10.5	M8×1
206255	CP-6	CP0111	20	15	15.5	12.5	M10×1
207255	CP-8	CP0221	28	20	22.5	17	M14×1.5

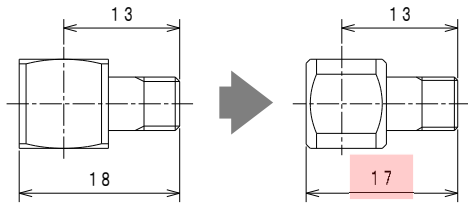


9. Other Items

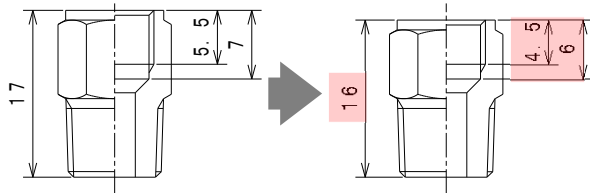
Refer the drawing to check the change

Compatibility

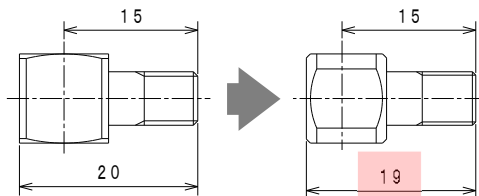
○ : Yes × : No



Before		○After(Seal Coated)	Thread Size	
Part Number	Model	Part Number	Internal Thread	External Thread
106191	***	EC2040	M6×1	M6×1



Before		○After(Seal Coated)	Thread Size	
Part Number	Model	Part Number	Internal Thread	External Thread
106011	SA-4K	SA2100	M8×1	R1/8



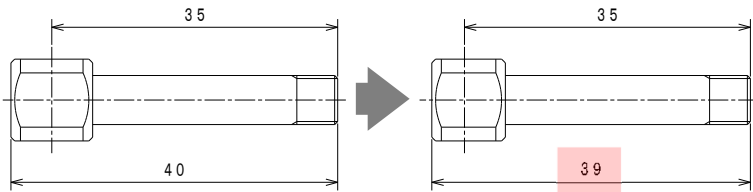
Before		○After(Seal Coated)	Thread Size	
Part Number	Model	Part Number	Internal Thread	External Thread
106194	***	EC7140	M6×1	M6×0.75

9. Other Items

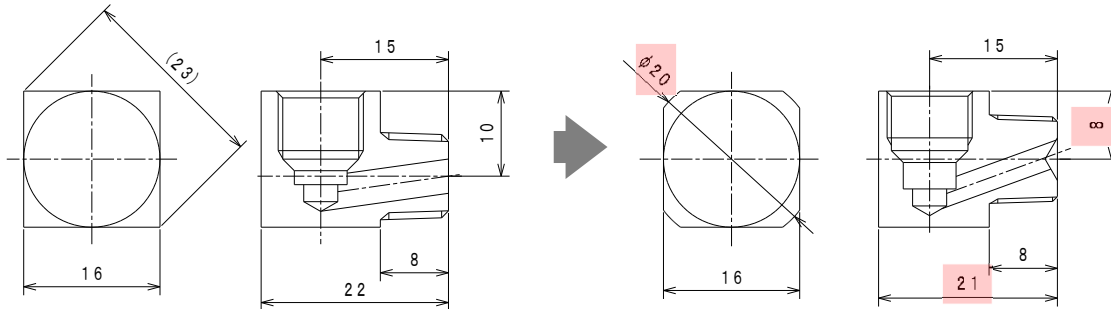
Refer the drawing to check the change

Compatibility

○ : Yes × : No



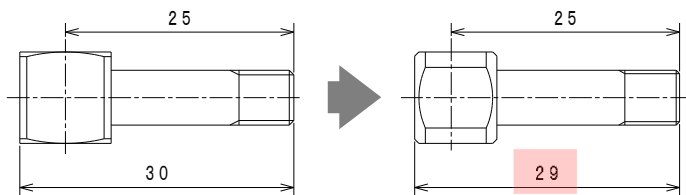
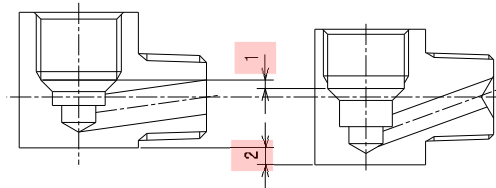
Before		○After(Seal Coated)	Thread Size	
Part Number	Model	Part Number	Internal Thread	External Thread
166053	***	EA7340	M6 × 1	M6 × 1



Before		○After(Seal Coated)	Thread Size	
Part Number	Model	Part Number	Internal Thread	External Thread
106038	***	EA5220	M10 × 1	M10 × 1

【Compared with the past】

- Seat position : Difference of 1mm
- After installation: 2 mm longer downwards



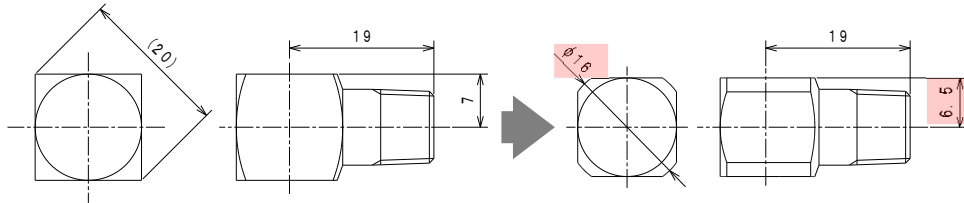
Before		○After	Thread Size	
Part Number	Model	Part Number	Internal Thread	External Thread
166043	***	EA7440	M6 × 1	M6 × 0.75

9. Other Items

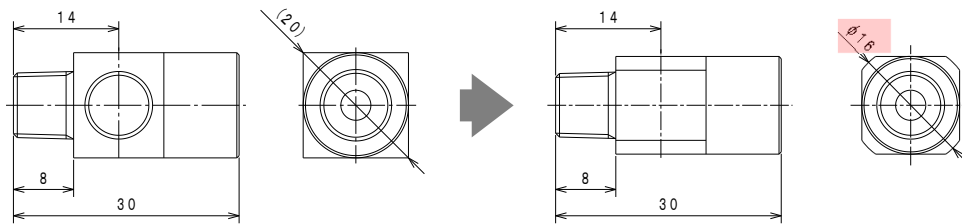
Refer the drawing to check the change

Compatibility

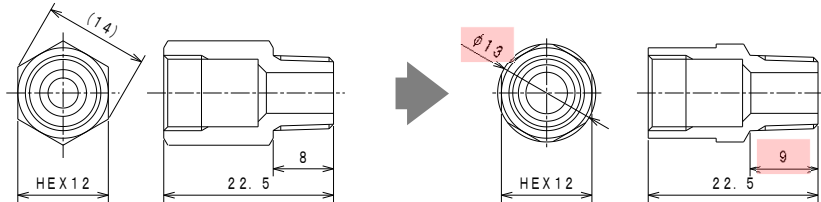
○ : Yes × : No



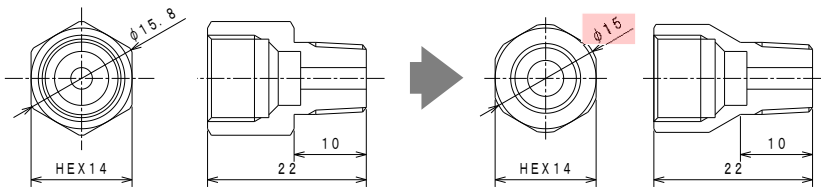
Before		○After(Seal Coated)	Thread Size		
Part Number	Model	Part Number	Internal Thread	Internal Thread	External Thread
106171	TCF	TC0000	Rc1/8	Rc1/8	R1/8



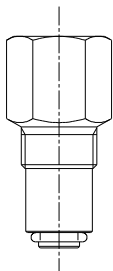
Before		○After(Seal Coated)	Thread Size		
Part Number	Model	Part Number	Internal Thread	Internal Thread	External Thread
106169	PGC	TC5000	Rc1/8	Rc1/8	R1/8



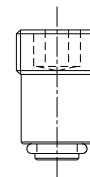
Before		○After(Seal Coated)	Thread Size	
Part Number	Model	Part Number	Internal Thread	External Thread
611850	MU-SA	611850	M10×1	R1/8



Before		○After(Seal Coated)	Thread Size	
Part Number	Model	Part Number	Internal Thread	External Thread
611825	SAP	611825	M12×1	R1/8



Before		○After	Thread Size	
Part Number	Model	Part Number	Internal Thread	External Thread
619841	MU-SC	619841	Rc1/8	M10×1



Before		○After	Thread Size	
Part Number	Model	Part Number	Internal Thread	External Thread
619840	MU-BP	619840	—	M10×1

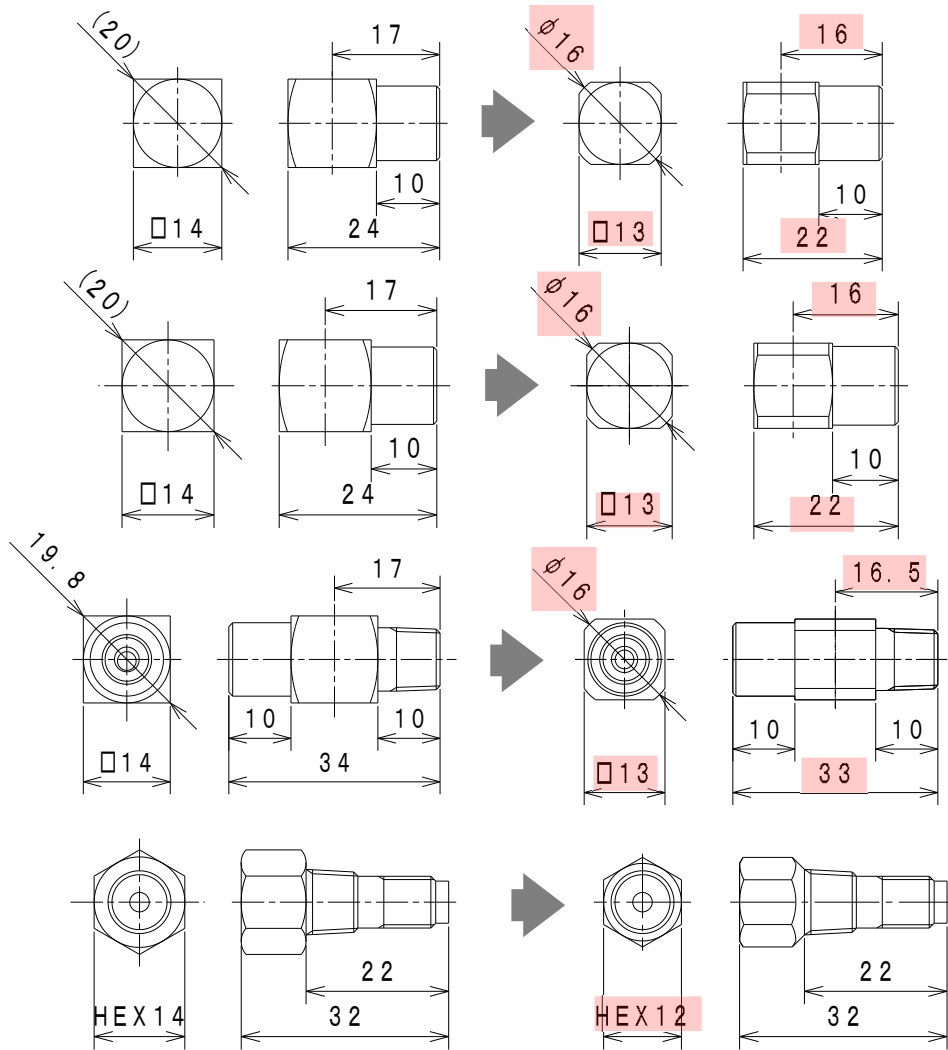
*Not nickel plated

9. Other Items

Refer the drawing to check the change

Compatibility

○ : Yes × : No



Before		✗After	Thread Size	
Part Number	Model	Part Number	Internal Thread	Internal Thread
106031	EA4-1F	EA7701	Rc1/8	M8×1

Before		✗After	Thread Size		
Part Number	Model	Part Number	Internal Thread	Internal Thread	Internal Thread
106041	TA4-1F	TA5401	Rc1/8	Rc1/8	M8×1

Before		✗After(Seal Coated)	Thread Size		
Part Number	Model	Part Number	Internal Thread	Internal Thread	External Thread
106051	TAR-1F	TA5100	M8×1	Rc1/8	R1/8

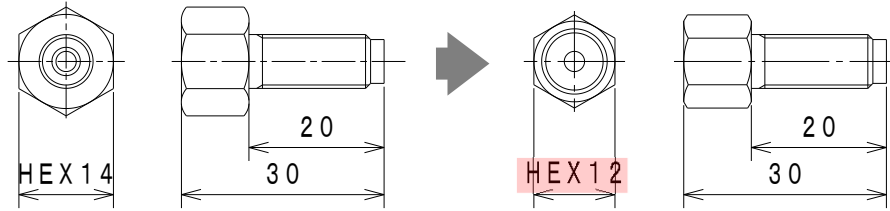
Before		✗After	Thread Size		
Part Number	Model	Part Number	Internal Thread	External Thread	External Thread
106061	SAR-4	SA7041	Rc1/8	R1/8	M8×1

9. Other Items

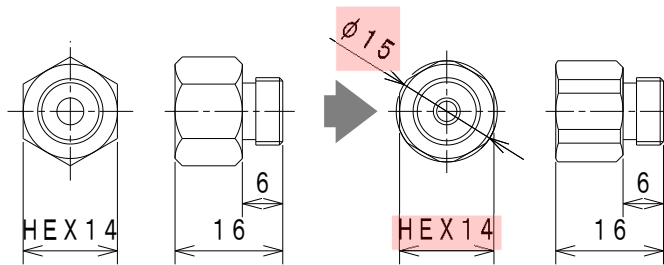
Refer the drawing to check the change

Compatibility

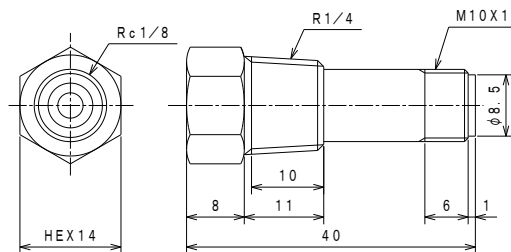
○ : Yes × : No



Before		○After	Thread Size		
Part Number	Model	Part Number	Internal Thread	External Thread	
106174	SC-4	SC7001	Rc1/8	M8×1	



Before		○After	Thread Size		
Part Number	Model	Part Number	Internal Thread	External Thread	
106177	SC-10A	SC7151	Rc1/8	M10×1	



Before		○After	Thread Size		
Part Number	Model	Part Number	Internal Thread	External Thread	External Thread
206223	SAR-6	KP7021	Rc1/8	R1/4	M10×1

9. LUBE Instant Connector

*There are not any change in size, shape, or material.

Before		After		
Model	Surface Treatment	Model	Surface Treatment	Part Number
KBC4-M6-F	無し	LIC4-S6A	Ni	209501
KBC4-M6P0.75-F	無し	LIC4-S6B	Ni	209502
KBC4-01-F	無し	LIC4-S1	Ni	209503
KBC4-02-F	無し	LIC4-S2	Ni	209504
KBL4-M6-FN	無し	LIC4-ES6A	Ni	209506
KBL4-01-FN	無し	LIC4-ES1	Ni	209508
KBC6-01-F	無し	LIC6-S1	Ni	209513
KBL6-01-F	無し	LIC6-ES1	Ni	209518
KBE4-01-F	無し	LIC4-E1	Ni	209523