

Automatic intermittent piston pump

MMX-II



Production discontinued.
Replaced by MMXL-III.

HOW to order

MMX-II - [] - [] - [] - [] - []

Discharge volume	
2	2.5ml
5	5.5ml

Interval(50Hz)	
A	1min. 25sec.
B	3min. 45sec.
C	7min. 30sec.
D	15min
E	30min
F	60min
G	120min

Voltage	
1	AC100V ϕ 1
2	AC200V ϕ 3

Oil level switch	
Blank	Blank
L	With

Reservoir Mounting Position	
Blank	Resin
F	Foot Mount
B	Wall Mount

※Metal reservoir only

Pump Position	
L	Pump position-Left
R	Pump position-Right

Reservoir capacity	
Blank	1.8 ℓ Resin reservoirs
3	3 ℓ Resin reservoirs
30	3 ℓ Metal reservoirs
40	4 ℓ Metal reservoirs
80	8 ℓ Metal reservoirs

Directions for use

- Do not remove the oil strainer to keep the pump clear of foreign matter.
- Oil viscosity varies with oil temperature. Be sure to use oil within the working viscosity range. Refer to the viscosity table.
- Do not use any special additive-contained oil, water soluble oil and solvent.
- Periodically check the oil in the reservoir for impurities. Replace it, if necessary, with fresh oil immediately. Be sure to clean the reservoir before oil change.
- Make sure that proper voltage is applied.
- Do not over tighten the discharge joint.
Refer to the tightening torque table.
- Do not press the discharge volume adjusting knob down by force.
- Adjust discharge volume only when the piston is fully relaxed (The knob is at the lowest position.).
- Make sure motor Rotary direction.

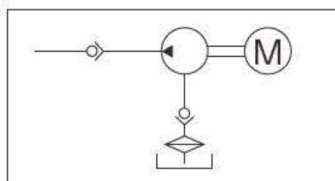
Specifications

Pump	Discharge volume	1.5~2.5ml/stroke 2.5~5.5ml/stroke
	Discharge pressure	0.4MPa
Motor (Other voltages available.)	Power	AC100V ϕ 1/0.23A, AC200V ϕ 3/0.11A (50Hz) AC100V ϕ 1/0.23A, AC200V ϕ 3/0.10A (60Hz)
	Output	5W Induction motor, E class
Oil level switch	Loading	0.5A, AC DC200V/30W
	Contact type	A contact (ON at low level)
Operation rating	Continuous	
Working viscosity range	30~1300mm ² /S	
Reservoir capacity	0.8 ℓ , 3 ℓ (plastic) 3 ℓ , 4 ℓ , 8 ℓ (sheet metal)	
Weight	3kg (1.8l plastic)	
Others	Rotary directions : Clockwise A 2 μ F condenser for the 100V motor is integrated into the terminal box.	

Replacement Motor ModelModel

Model	Part Number	Voltage
N-02	679320	AC100V ϕ 1/5W
N-10	679324	AC100V ϕ 3/5W
N-08	679323	AC200V ϕ 1/5W

Hydraulic circuit drawing



※ Should the pump malfunction, contact us for immediate response with substitution.

● Related parts

Flow unit : P.129	PJ junction : P.141	Tubing : P.171	Pressure gauge : P.162	Filter FX-1 : P.159	Filter FY-20 : P.159	Pressure switch : P.163	Compression parts : P.169
Adapters : P.175	Reservoir : P.146						