

# Positive Displacement Injector Electric Pump with solenoid protection PDI plus Progressive Twin Electric Pump (for "T" series pumps)

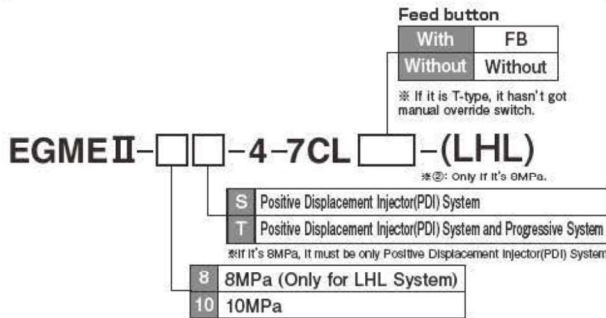
## EGME II

This pump is a small, low cost pump only for our original cartridge grease. EGME-II pumps have a built in solenoid protection circuit which eliminates the 7.5 min maximum running time of other EGM pumps.

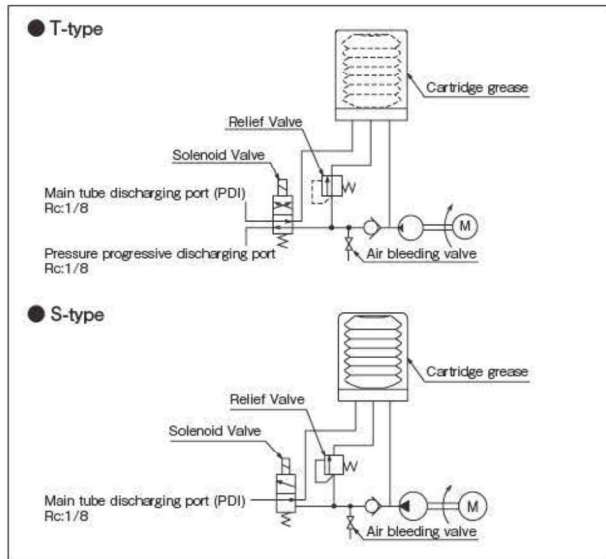


[EGME II]

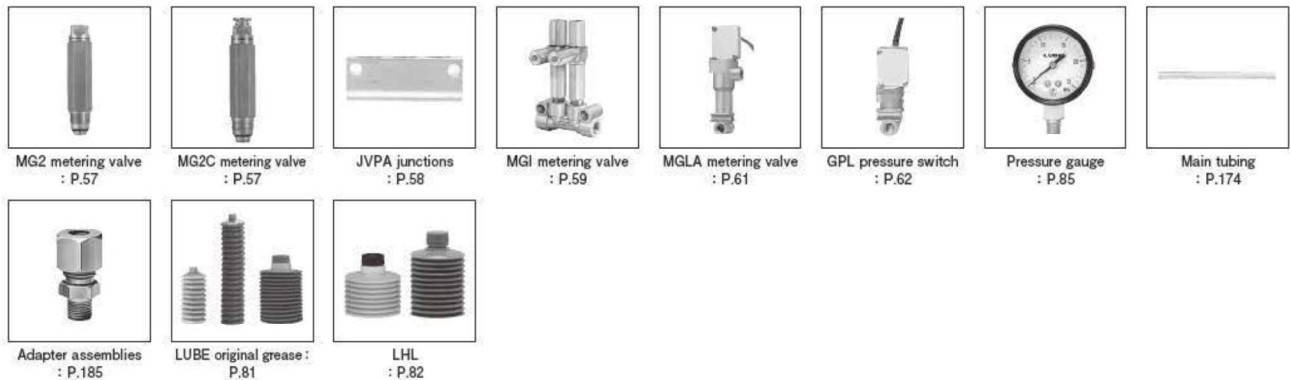
### HOW to order



### Hydraulic circuit diagram



### ● Related parts



### Specifications

Power	DC24V
Power Consumption	28.8W
Discharging pressure	8MPa (Only for LHL System) 10MPa
Maximum discharging time	No restriction
Interval time	More than 10 seconds
Wiring method	Terminal connection
Manual override switch	With(Optional: Only PDI system) ※1
Grease level switch	With
Solenoid cover	Non combustible plastic (UL94-V0)
Protection class	IP54
CE approval	With
Pump air bleeding	With restriction

※1 Although the Manual Override Switch provides a dry contact to activate the pump, its capacity is not sufficient to sustain the power required to operate the pump. Therefore, the power needs to be provided directly to the pump from the machine control panel.

### Directions for use

- Use recommended grease.
- Never use molybdenum disulfide-contained grease.
- Use lithium greases. (Contact us for consultation when other than lithium grease is used.)
- Do not use any greases containing substances that attack brass and rubber.
- When the cartridge is changed, pay attention that foreign particles are not getting inside.
- Do not discharge continuously.
- After changing the cartridge, bleed the air inside the pump by opening the air bleeding valve.