

Dual-function motorized pump

EGME-T

Can operate both PDI and PRO series progressive systems by switching built-in-solenoid valve. EGME pumps have a built in solenoid protection circuit which eliminate the 7.5 min maximum running time of other EGM pumps.

Production discontinued.
Replaced by EGME II -T.



[EGME-10T-4-2C]

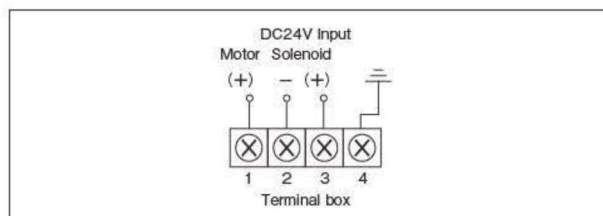
HOW to order

EGME-10T-4-□C

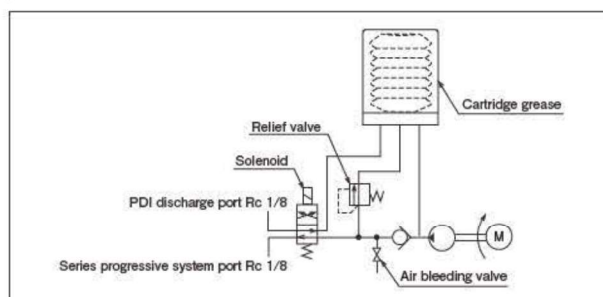
Cartridge

2	200ml
4	400ml
7	700ml

Wiring diagram



Hydraulic circuit drawing



Specifications

Pump	Discharge volume	10ml/min
	Discharge pressure	10MPa (safety valve set pressure)
Power DC24V	Motor	20W/0.8A
	Pressure relief solenoid	10W/0.4A
	Total	30W/1.2A
Working Viscosity	Cartridge Grease No.000,00,0,1	
Recommended grease	MP0, FS2, MT1	
Cartridge size	200ml, 400ml, 700ml	
Weight	1.8kg (4C), 2.8kg (7C)	
Pressure relief	Built-in solenoid	

Directions for use

- Use recommended greases.
- Never use molybdenum disulfide-contained grease
- Use lithium greases. (Contact us for consultation when other than lithium grease is used.)
- Do not use any greases containing substances that attack brass and rubber.
- Avoid continuous operation.

● Related parts

