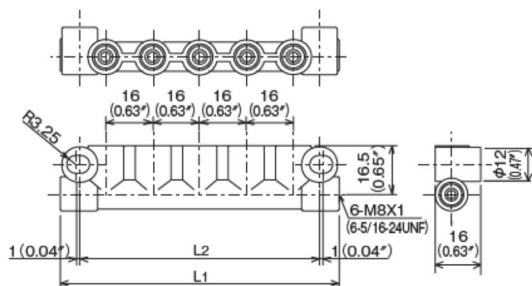


Junction

For Flow unit/ Control unit installation



Dimensional drawing



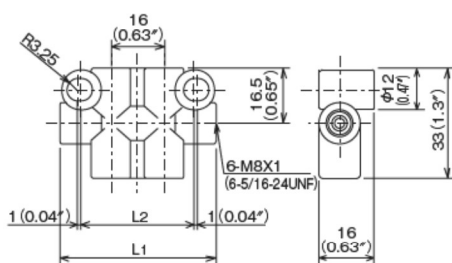
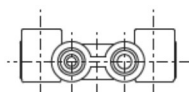
[PJ-7S]

Model

Model	Part Number		Specifications	Size	
	M8 × 1	5/16-24 UNF		L ₁	L ₂
PJ-4S	106401	186401	Single type for 2ports	47(1.85")	34(1.34")
PJ-5S	106402	186402	Single type for 3ports	63(2.48")	50(1.97")
PJ-6S	106403	186403	Single type for 4ports	79(3.11")	66(2.60")
PJ-7S	106404	186404	Single type for 5ports	95(3.74")	82(3.23")
PJ-8S	106405	186405	Single type for 6ports	111(4.37")	98(3.86")
PJ-9S	106406	186406	Single type for 7ports	127(5.00")	114(4.49")
PJ-10S	106407	186407	Single type for 8ports	143(5.63")	130(5.12")
PJ-12S	106408	186408	Single type for 10ports	175(6.89")	162(6.38")

●Material : ZDC

(S/L) Single Line Resistance Junctions for installing both Flow and control unit.



[PJ-6D]

Model	Part Number		Specifications	Size	
	M8 × 1	5/16-24 UNF		L ₁	L ₂
PJ-6D	106411	186411	Double type for 4ports	47(1.85")	34(1.34")
PJ-8D	106412	186412	Double type for 6ports	63(2.48")	50(1.97")
PJ-10D	106413	186413	Double type for 8ports	79(3.11")	66(2.60")

●Material : ZDC

Model	Part Number	Specifications	Size	
			L ₁	L ₂
PJ-12D	106414	Double type for 10ports	82(3.23")	94(3.70")
PJ-14D	106415	Double type for 12ports	98(3.86")	110(4.33")
PJ-16D	106416	Double type for 14ports	114(4.49")	126(4.96")

●Material : ZDC