

## Tubing Parts

### Compression parts

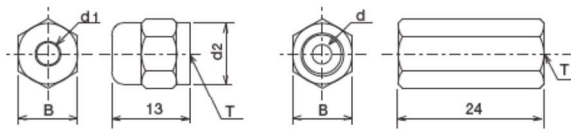
Used for connecting tubing to junctions, adapters and metering valves.

RoHS compliant products are also available. Please contact us for details.



Some parts are available with standard threads. Contact us for details.

#### Dimensional drawing



[CN-4-B]

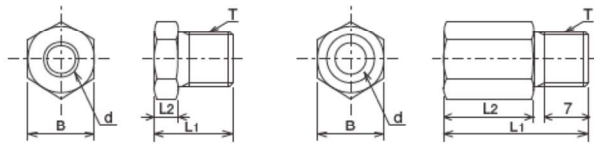
#### Model

##### Compression nut

| Model | Part Number | Tubing O.D. (φ) | T     | d1 (φ) | d2 (φ) | B  |
|-------|-------------|-----------------|-------|--------|--------|----|
| CN-4  | 106251      | 4               | M8×1  | 4.2    | 10     | 10 |
| CN4-B | 166268      |                 |       |        | —      |    |
| CN-6  | 206251      | 6               | M10×1 | 6.2    | 12     | 12 |

●Material : C3604

CN-4-B is special parts for braided tubing.



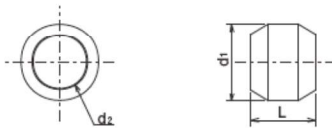
[CB-4-B, CB-6-B]

##### Compression bushing

| Model   | Part Number | Tubing O.D. (φ) | T     | d1 (φ) | L <sub>1</sub> | L <sub>2</sub> | B    |
|---------|-------------|-----------------|-------|--------|----------------|----------------|------|
| CB-4-10 | 106252      | 4               | M8×1  | 4.2    | 11.6           | 4              | 10   |
| CB-4-8  | 106253      |                 |       |        | 20             | 12             | 8    |
| CB-4-B  | 166253      |                 |       |        | —              | —              | —    |
| CB-6    | 206252      | 6               | M10×1 | 6.2    | 12.5           | 4              | 10   |
| CB-6-B  | 166255      | 8               |       |        | 20             | 12             |      |
| CB-8    | 207252      | 8               |       |        | M14×1.5        | 8.2            | 18.5 |

●Material : C3604

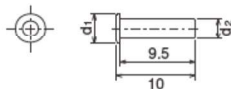
CB-4B and CB-6-B are special parts for Braided tubing.



##### Compression sleeve

| Model | Part Number | Tubing O.D. (φ) | d1 (φ) | d2 (φ) | L   |
|-------|-------------|-----------------|--------|--------|-----|
| CS-4  | 106254      | 4               | 6      | 4.1    | 5   |
| CS-6  | 206254      | 6               | 8      | 6.1    | 6   |
| CS-8  | 207254      | 8               | 10     | 8.1    | 6.5 |

●Material : C3604



##### Tube insert (For nylon tubing)

| Model | Part Number | Tubing O.D. (φ) | d1 (φ) | d2 (φ) |
|-------|-------------|-----------------|--------|--------|
| TI-4  | 106271      | 4               | 3.8    | 2.5    |
| TI-6  | 206271      | 6               | 5.8    | 4      |
| TI-8  | 207271      | 8               | 7.8    | 6      |

●Material : C3604