

# Air-Oil Sensor

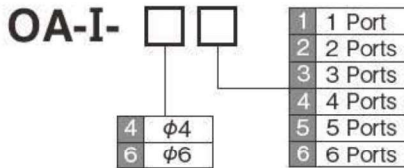
## OA- I

Integral element of oil/air lubrication system. (suitable for detection on oil tubing beyond mixing valve)



### Specifications

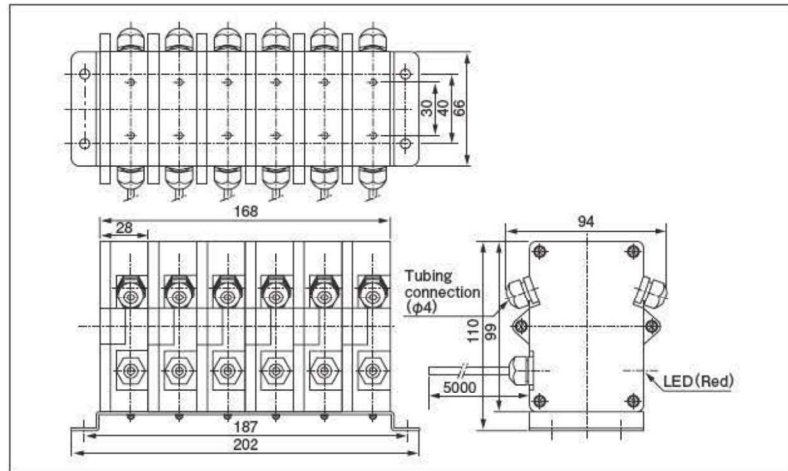
Power/Voltage	DC24±10%
Abnormal output	Photo coupler (open collector)
Working temperature range	0~+50°C (no sweating)
Working ambient humidity	35~85%RH



### Model

Part Number	Pipe O.D (φ)
420031	4
420032	6

### Dimensional drawing

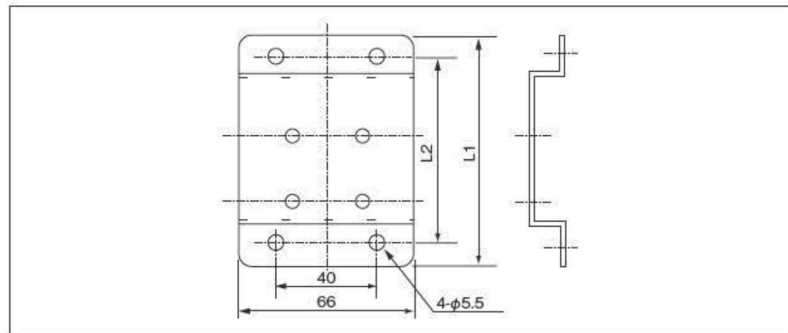


### Air-Oil sensor mounting plate

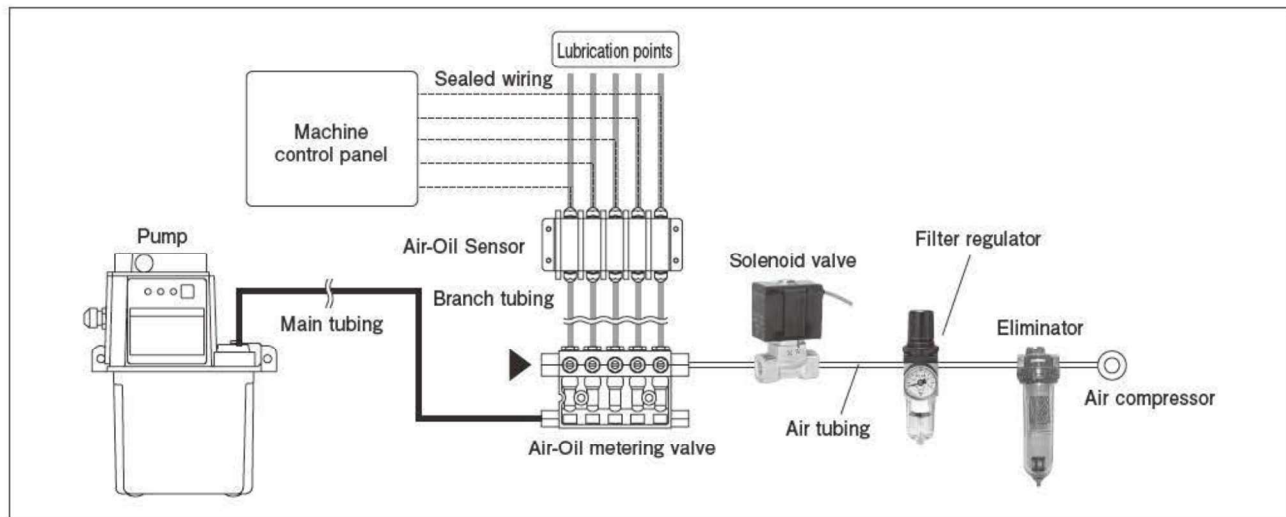
#### Model

Sequential number	L1	L2	Part Number
1	60	44	613011
2	88	72	613012
3	116	100	613013
4	144	128	613014
5	172	156	613015
6	200	184	613016

### Model



### System planning



Accessories