

# Automatic intermittent piston pump

## MLZ

Compact version of MMXL-III. Ideal for small machines with limited installation space



[Standard]

[CE]

### HOW to order

MLZ-□-□-□-□

Blank	Standard
CE	CE type

Interval(50Hz)	
A	6min
B	15min
C	30min
D	60min
E	120min

### Oil level switch

Blank	Blank
L	With

Voltage	
1	AC100V φ1
2	AC200V φ1

### Directions for use

- Oil viscosity varies with oil temperature. Be sure to use oil within the working viscosity range. Refer to the viscosity table.
- Do not use any special additive-contained oil, water soluble oil and solvent.
- Periodically check the oil in the reservoir for impurities. Replace it, if necessary, with fresh oil immediately. Be sure to clean the reservoir before oil change.
- Make sure that proper voltage is applied.
- Do not over tighten the discharge joint. Refer to the tightening torque table.
- Do not press the discharge volume adjusting knob down by force.
- Adjust discharge volume only when the piston is fully relaxed (The knob is at the lowest position.).

※ Should the pump malfunction, contact us for immediate response with substitution.

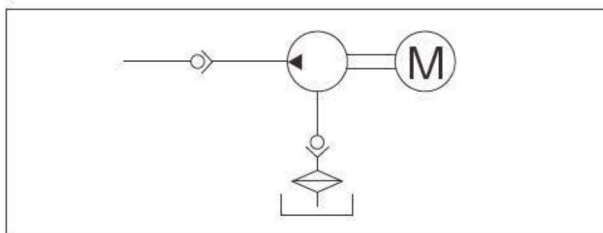
### Specifications

Pump	Discharge volume	1.5~2.5mℓ/stroke
	Discharge pressure	0.3MPa
Motor	Voltage / current	AC100V φ1/50mA, AC200V φ1/25mA (50Hz) AC100V φ1/42mA, AC200V φ1/18mA(60Hz)
	Output	3W Synchronous
Emergency detection	Oil level switch	Contact type A contact (NO) ON at low level Contact capacity 0.5A, AC DC200V/30W smaller
Operation rating	Continuous	
Working viscosity range	30~1300mm <sup>2</sup> /S	
Reservoir capacity	0.8ℓ	
Weight	1.2kg	
Protection class	IP54 (CE Approved type)	

### Replacement Motor Model

Interval	6min	15min	30min	60min	120min	
Motor RPM (50Hz)	10	4	2	1	1/2	
Replacement Motor Model	100V	M-B1	M-C1	M-D1	M-E1	M-F1
	200V	M-B2	M-C2	M-D2	M-E2	M-F2

### Hydraulic circuit drawing



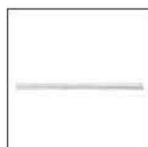
### ● Related parts



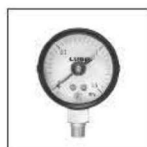
Flow unit  
: P.129



PJ junction  
: P.141



Tubing  
: P.171



Pressure gauge  
: P.162



Filter  
FX-1 : P.159



Filter  
FY-20 : P.159



Pressure switch  
: P.163



Compression parts  
: P.169



Adapters  
: P.175



Reservoir  
: P.146