

Positive Displacement Injector (PDI) System

EGM

Motor driven piston pump



[EGM-10S-4-4C]



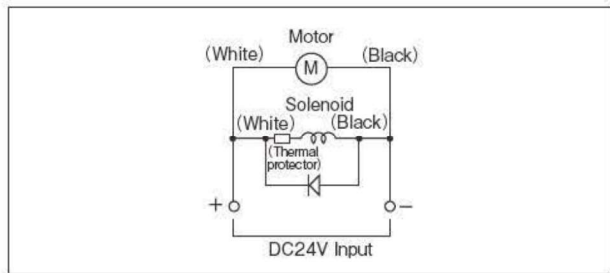
[EGM-10S-4-7C]

HOW to order

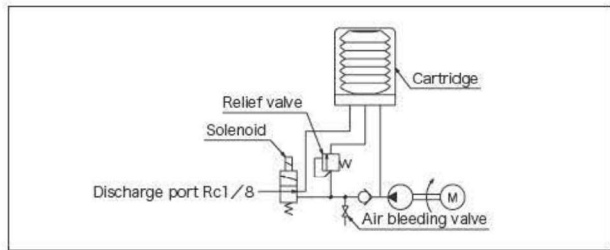
EGM-10S-4-□C

Cartridge	
2	200ml
4	400ml
7	700ml

Wiring diagram



Hydraulic circuit drawing



Specifications

Pump	Discharge volume	10ml/min
	Discharge pressure	10MPa
Power DC24V	Motor	20W/0.8A
	Pressure relief solenoid	26W/1.1A
	Total	46W/1.9A
Pressurization	Max. ON time: 7.5 min.	
Power distribution rate	Max.25% (20°C)	
Working Viscosity	Cartridge grease No.000,00,0,1	
Recommended grease	MP0, FS2, MT1	
Cartridge size	200ml , 400ml , 700ml	
Weight	1.8kg (4C) , 2.8kg (7C)	
Pressure relief	Built-in solenoid	

Directions for use

- Use recommended greases.
- Never use molybdenum disulfide-contained grease
- Use lithium greases. (Contact us for consultation when other than lithium grease is used.)
- Do not use any greases containing substances that attack brass and rubber
- When refilling, take care not let foreign matter in the grease.
- Avoid continuous operation
- For normal operation or when filling grease into the main tubing, please remember to adhere to the 3 to 1 ratio for off time to running time not exceeding 7.5 minutes. Failure to follow this could result in permanent damage to the solenoid not allowing the pump to ever build pressure.

● Related parts



MG2 metering valve : P.57



MG2C metering valve : P.57



JVPA junctions : P.58



MGI metering valve : P.59



MGLA metering valve : P.61



GPL pressure switch : P.62



Pressure gauge : P.85



Main tubing : P.174



Adapter assemblies : P.185



LUBE original grease : P.81



LHL : P.82