

Series Progressive System manual grease pump

EGH

Compact, low-cost manually operated pump

Model Reference

EGH-□□

Type of reservoir (effective capacity)

3P	Reservoir type (260mℓ)
2C	Cartridge type (200mℓ)
4C	Cartridge type (400mℓ)

Model

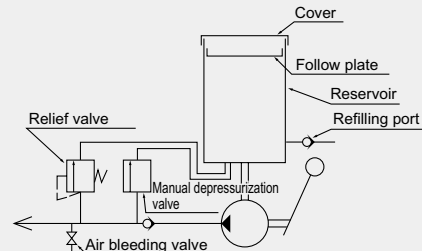
Model	Part Number
EGH-2C	103780
EGH-3P	103783
EGH-4C	103782

Specifications

EGH-3P	
Pump	Discharge volume 1mℓ/stroke
	Discharge pressure 10MPa (safety valve set pressure)
Working Viscosity	NLGI No.000, 00, 0, 1 (lithium grease)
Recommended grease	MP0, FS2, MT1
Reservoir Capacity size	260mℓ
Weight	1.4kg
Pressure relief	Manual pressure relief lever
EGH-2C EGH-4C	
Pump	Discharge volume 1mℓ/stroke
	Discharge pressure 10MPa (safety valve set pressure)
Working viscosity	Cartridge grease No.000, 00, 0, 1 (lithium grease)
Recommended grease	MP0, FS2, MT1
Cartridge size	200mℓ, 400mℓ Cartridge
Weight	1.4kg
Pressure relief	Manual pressure relief lever



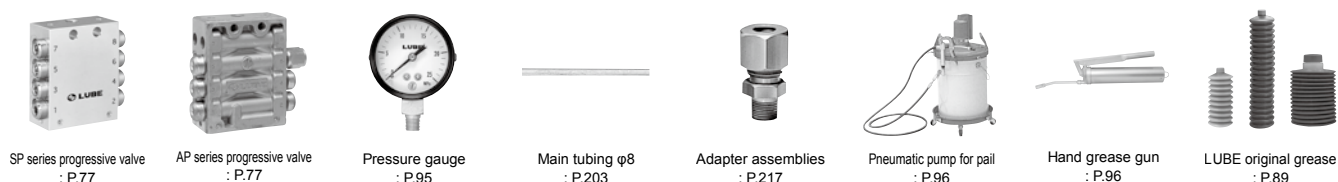
Hydraulic circuit drawing



Directions for use

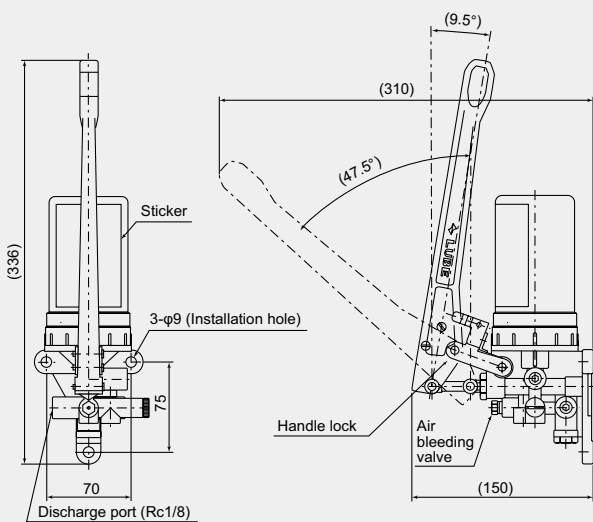
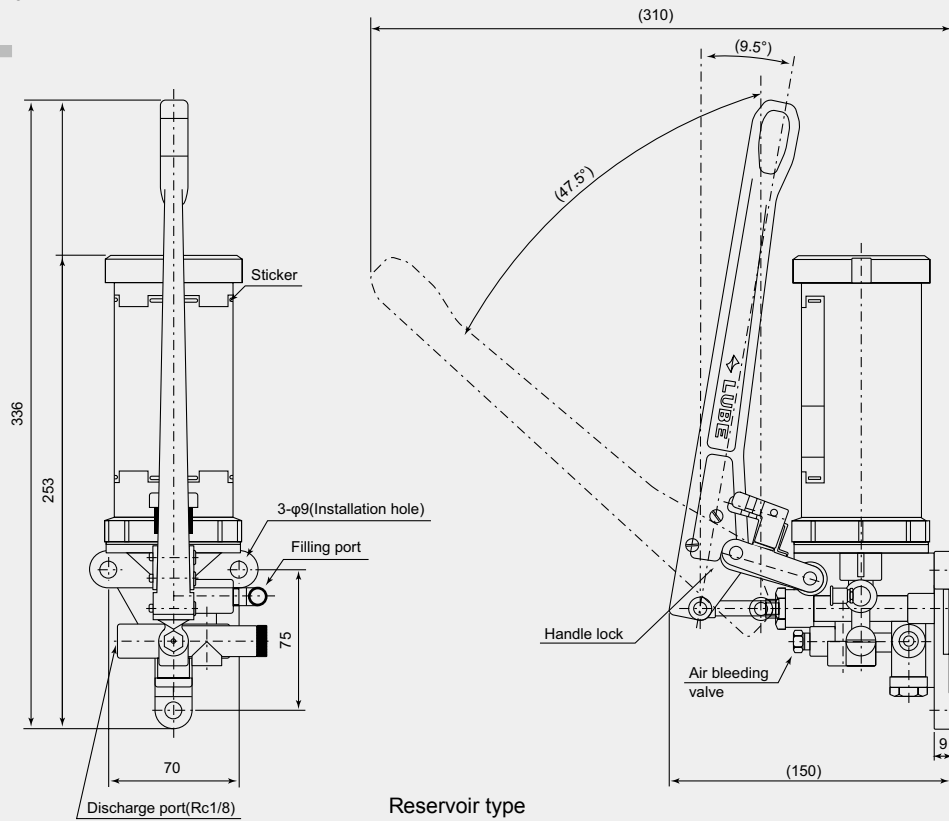
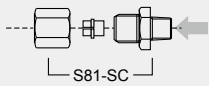
- Use recommended cartridge grease only.
- Never use greases containing molybdenum disulfide.
- Use lithium greases. (Contact LUBE for consultation when non-lithium greases must be used.)
- Do not use any greases containing substances that attack brass or rubber.
- When refilling reservoir or replacing cartridge, take care not to let foreign matter into the grease or pump.
- After refilling reservoir or replacing cartridge, bleed air from the pump by opening the air bleeding valve.
- Always return operating lever to locked position to relieve system pressure.

Related parts

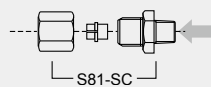


Dimensional drawing

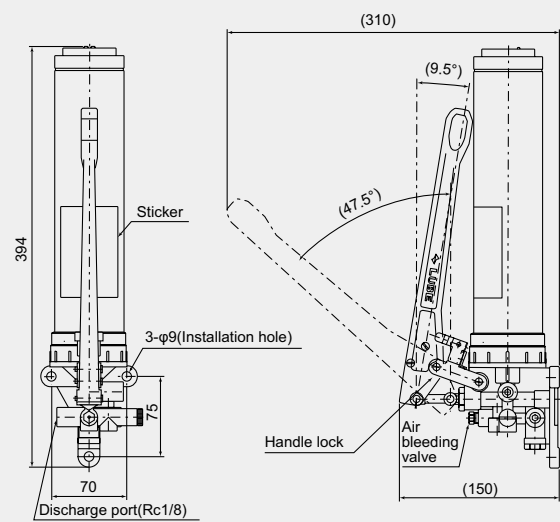
Parts for connecting to the discharge port



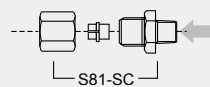
Parts for connecting to the discharge port



Cartridge type [EGH-2C]



Parts for connecting to the discharge port



Cartridge type [EGH-4C]