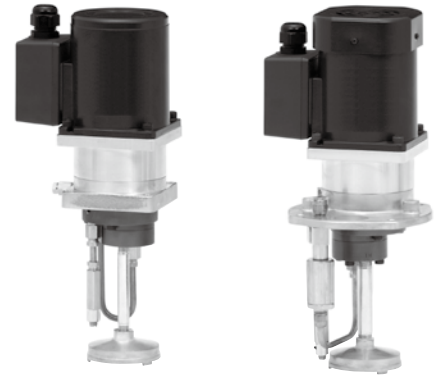


# Automatic intermittent gear pump

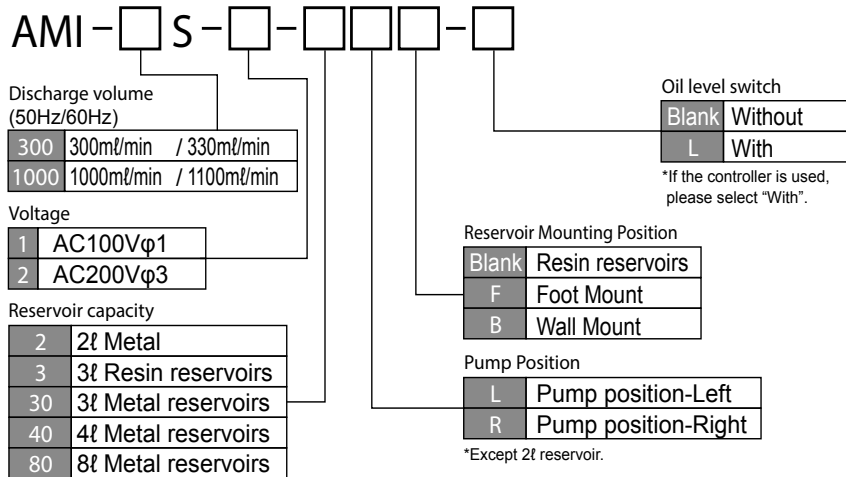
AMI-300S . AMI-1000S



[AMI-300S]

[AMI-1000S]

## Model Reference



## Directions for use

- Replace or clean the suction filter at least once a year.
- Do not remove the oil fill strainer in order to keep the pump clear of foreign matter.
- Oil viscosity varies with oil temperature. Be sure to use oil within specified working viscosity range. (P.237)
- Do not use any special additive-contained oil, water soluble oil, or solvent.
- Periodically check the oil in the reservoir for impurities. Replace it, if necessary, with fresh oil immediately. Be sure to clean the reservoir before replacing oil.
- Make sure that proper voltage is applied.
- Do not over tighten the discharge joint.
- Refer to the torque table. (P. 251)

\* Should the pump malfunction, contact LUBE for consultation.

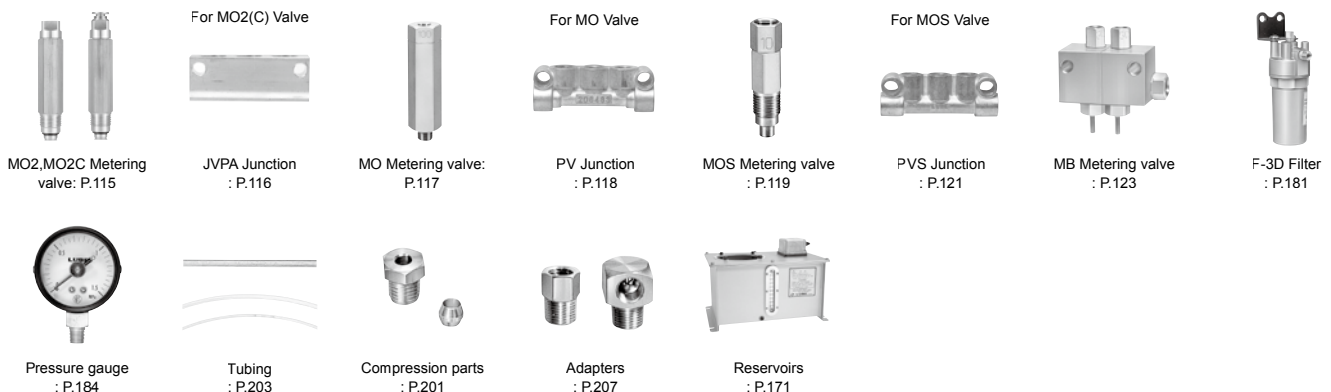
## Specifications

|                                | AMI-300S   | AMI-1000S                                 |  |
|--------------------------------|--|---|--|
| <b>Pump</b>                    | Discharge volume   | 300ml/min (50Hz)<br>330ml/min (60Hz)      | 1000ml/min (50Hz)<br>1100ml/min (60Hz)         |
|                                | Discharge pressure   | 2.5MPa (25kgf/cm <sup>2</sup> ) 362.5 psi |  |
| <b>Motor</b>                   | Power  | AC100Vφ1/0.76/0.74A<br>(condenser 11 μF)  | AC100Vφ1/1.2/1.19A (50Hz)<br>(condenser 20 μF) |
|                                | Output   | AC200Vφ3/0.32A/0.3A                       | AC200Vφ3/0.5/0.43A                             |
| <b>Operation rate</b>          | Max. Discharge time :3min<br>Min. Interval time : 3min   |   |  |
| <b>Working viscosity range</b> | 65-1300mm <sup>2</sup> /S (50Hz)   |   |  |
| <b>Reservoir capacity</b>      | Standard reservoir up to 50 liters available.  |   |  |
| <b>Weight</b>                  | 4.4kg  | 7.1kg                                     |  |
| <b>Others</b>                  | With Pressure relief mechanism,<br>Motor rotation: Clockwise<br><br>Meca-tron controller is available. |   |  |
| <b>External fuse</b>           | 100V/2A 200V/1A  | 100V/3A 200V/1A                           |  |

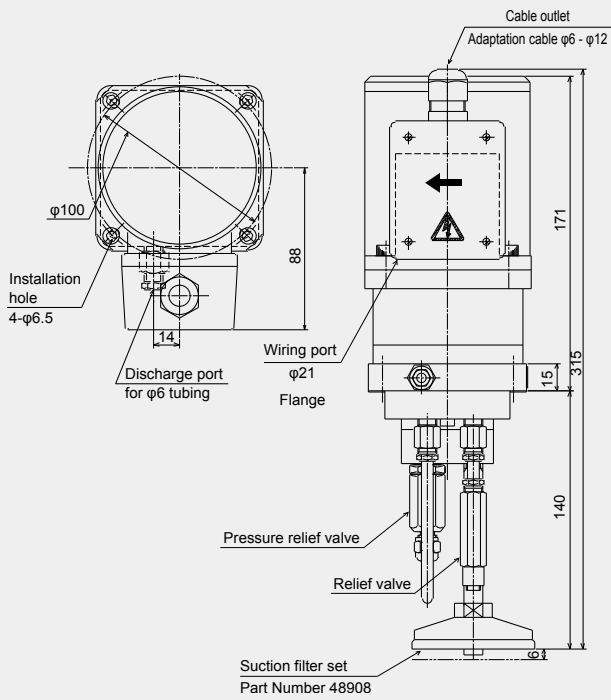
## Model

| Model       | Part Number |
|-------------|-------------|
| AMI-1000S-1 | 202103      |
| AMI-1000S-2 | 202101      |
| AMI-300S-1  | 202033      |
| AMI-300S-2  | 202034      |

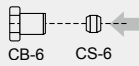
## Related parts



### Dimensional drawing (AMI-300S)

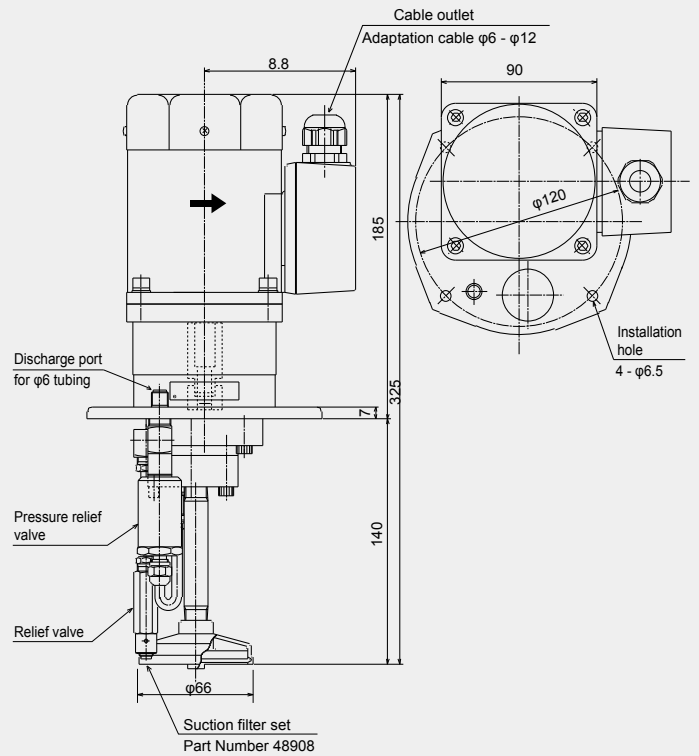


Parts for connecting to the discharge port

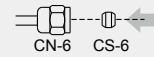


[AMI-300S]

### Dimensional drawing (AMI-1000S)

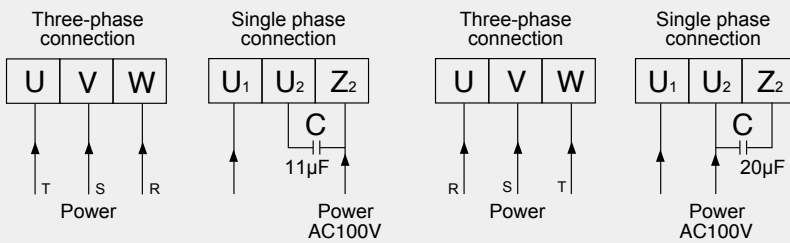


Parts for connecting to the discharge port



[AMI-1000S]

### Wiring diagram



[AMI-300S]

[AMI-1000S]

### Hydraulic circuit drawing

